

Daily Delight

SATURDAY • JULY 18 • 2026

World Listening Day

Take a few moments to listen to the world around you today and note what you hear. Can you hear the sound of the air conditioner? The shuffling of feet? The scratching of a pen on paper? Is someone laughing nearby? Is someone telling a story? World Listening Day celebrates acoustic ecology, the study of the relationship humans have with nature through sound.

Listening with intention is an art that requires undivided attention and needs to be practiced. Aside from simply improving listening skills, effective and active listening also sharpens your awareness of the surrounding area. There is so much to learn from the world around us when you stop and listen. You might be surprised at some of the things you hear!

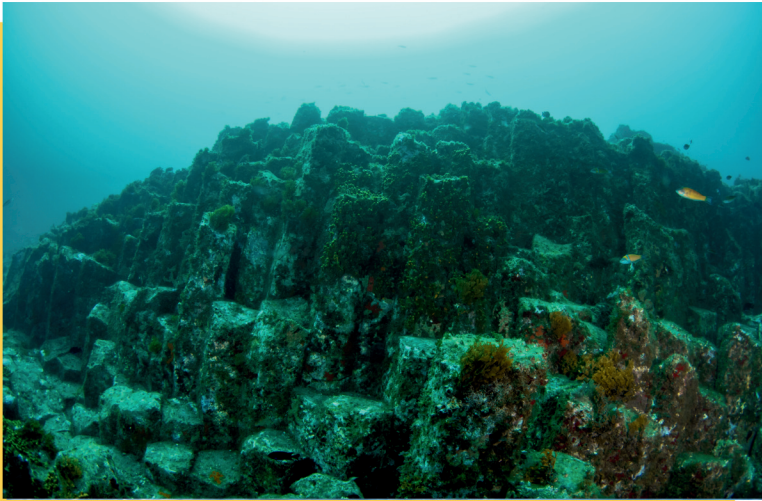


Today in History



In 2008, Billy Joel performed the last of two concerts dubbed “The Last Play at Shea.” The 1964 baseball stadium was scheduled for demolition. Joel is a six-time Grammy Award winner, was inducted into the Songwriter Hall of Fame in 1992, and the Rock and Roll Hall of Fame in 1999.

senior **living**
activity assistant
powered by **spectrio**



DID YOU KNOW?

The World's Longest Mountain Chain

The world's longest mountain range runs 40,389 miles, and 90% of it is covered by ocean water. Called the Mid-Ocean Ridge, this underwater range was formed by magma rising to fill gaps formed as Earth's plates shifted. Its mountains average a depth of 8,200 feet below the water's surface. In comparison, the longest chain of mountains on land is South America's Andes, a paltry 4,350 miles long.

TRIVIA

According to the FDA, Dr. Pepper is what type of soda?

- A** Fruit-flavored soft drink
- B** Root beer
- C** Pepper soda
- D** Cola

TODAY'S FUNNY

What is a skeleton's favorite snack?

Ribs!

TODAY'S WISDOM

"You unlock this door with the key of imagination."

- Rod Serling

WORD SEARCH

Listening to Vinyl



Albums

Item

Turntables

Music

Needle

Piece

Player

Single

Statement

Stereo

Records

Grooves

SUDOKU

How To Play:

Each 9x9 box is comprised of 9 smaller 3x3 boxes. Each of these smaller boxes must be filled in with numbers from 1-9. Each row and column of the larger 9x9 box should not have any numbers repeated.

7				3			6	8
		1	5		4		2	
2	4	3	9		6	7		
	8	5	7					
1			6		9	3		
				4				1
	7	8			5			6
					1		7	9
5	1		4		7			

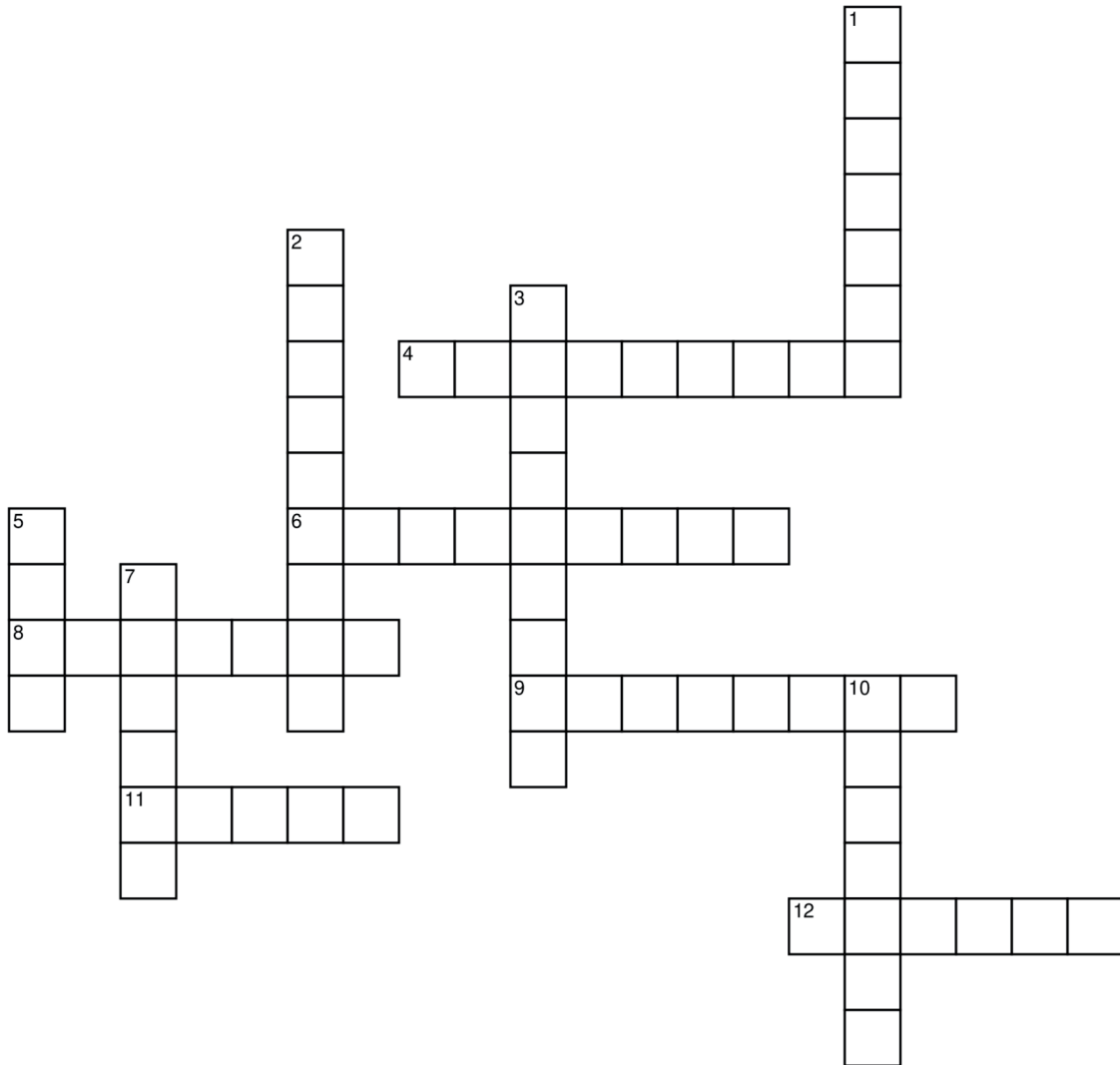
6		8	2			7		4
	7	5	3	8	6	2	1	9
		9			4		8	6
	1				7	8	3	2
3	5					9	4	7
					3	1		
5		1	8					
	4		1					8
8		3	7				2	1

Helpful Tip:

If you get stuck, try asking yourself "Where can I place number X in this row or column?" Scan to see if the number is already in that row, column, or box.

MINI CROSSWORD

Parenting



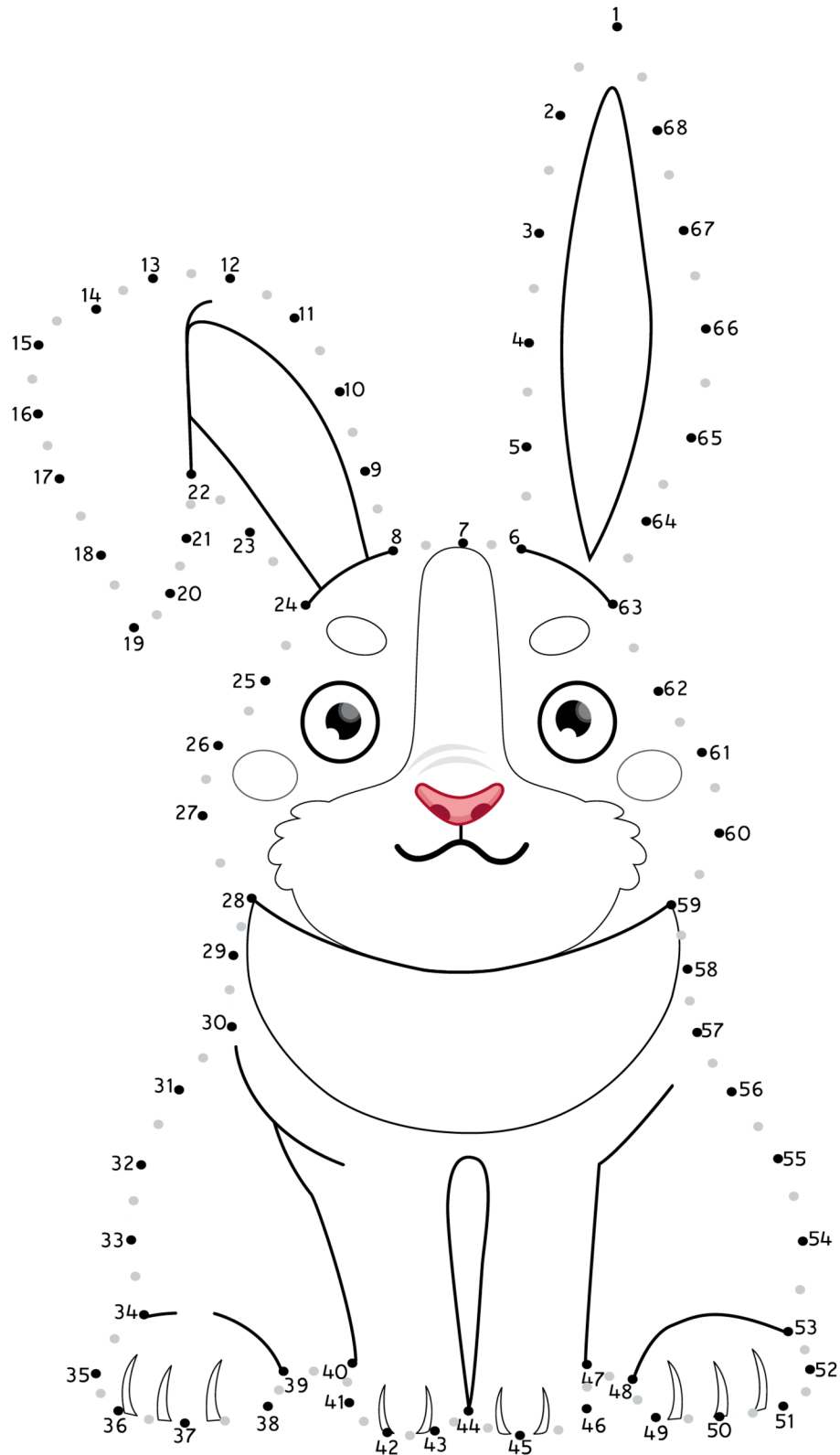
Across

- [4] Feeling secure
- [6] Group of residents
- [8] Foster or care for
- [9] Future generation
- [11] Entity holding assets
- [12] Kind of tree

Down

- [1] Brace
- [2] Nanny's duties
- [3] Sway
- [5] Come together
- [7] Increase in size
- [10] Teach

Connect the Dots





SOLUTIONS

Trivia Answer: C

The American Food and Drug Administration has ruled that Dr Pepper is not a cola, nor a root beer, nor a fruit-flavored soft drink. Rather, Dr Pepper is said to be in a category of its own kind, called "pepper soda", named for the brand.

7	5	9	1	3	2	4	6	8
8	6	1	5	7	4	9	2	3
2	4	3	9	8	6	7	1	5
6	8	5	7	1	3	2	9	4
1	2	4	6	5	9	3	8	7
3	9	7	2	4	8	6	5	1
9	7	8	3	2	5	1	4	6
4	3	2	8	6	1	5	7	9
5	1	6	4	9	7	8	3	2

D	M	Y	M	R	T	R	N	T	E	K	G	I	V	T	P	E	P
N	V	T	D	G	F	G	V	S	D	Z	I	E	D	J	W	P	I
O	E	N	S	S	N	S	A	Q	Z	S	H	Z	I	Y	L	C	Y
P	I	E	C	E	U	C	E	M	M	U	F	R	L	A	E	L	M
R	I	M	D	L	Z	L	F	U	N	C	A	H	Y	S	E	S	Y
P	I	E	Y	L	B	Q	B	W	D	H	T	E	K	E	C	X	H
R	G	T	E	S	E	L	B	A	T	N	R	U	T	V	Z	A	P
E	C	A	I	X	A	W	X	Y	D	M	Y	Q	A	O	T	A	U
C	V	T	K	X	V	V	Q	J	N	L	L	X	T	O	K	Y	S
O	N	S	K	M	P	S	G	S	V	H	V	D	I	R	A	T	Y
R	C	T	I	Q	U	Q	V	Y	B	C	E	G	W	G	E	O	X
D	P	H	D	J	W	S	H	C	E	U	K	G	I	R	Z	G	U
S	A	S	W	A	J	X	I	E	F	L	N	E	E	W	I	V	O
Y	I	C	N	P	V	M	Z	C	E	M	L	O	Y	M	P	J	H
D	P	J	C	B	D	Y	F	C	B	G	E	W	D	B	U	U	X
F	T	O	P	M	K	I	I	X	N	U	M	T	G	N	W	D	L
F	V	Q	A	U	P	Q	K	I	O	C	H	E	I	X	X	K	W
D	V	R	I	A	R	W	S	I	F	H	A	S	G	F	V	P	G

6	3	8	2	9	1	7	5	4
4	7	5	3	8	6	2	1	9
1	2	9	5	7	4	3	8	6
9	1	6	4	5	7	8	3	2
3	5	2	6	1	8	9	4	7
7	8	4	9	2	3	1	6	5
5	9	1	8	6	2	4	7	3
2	4	7	1	3	5	6	9	8
8	6	3	7	4	9	5	2	1

