

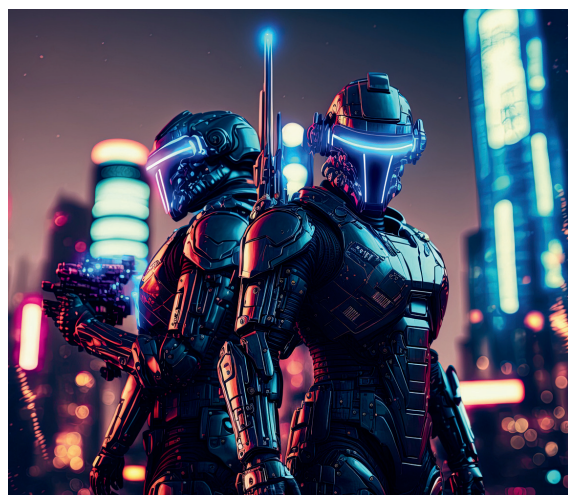
Daily Delight

FRIDAY • JANUARY 02 • 2026

National Science Fiction Day

National Science Fiction Day, which commemorates the birth of famed science fiction writer Isaac Asimov, promotes the celebration of science fiction as a genre, its creators, history, and various media, too.

On January 2nd annually, millions of science fiction fans across the United States read and watch their favorite science fiction. As we look back at some older science fiction in our current technology-infused world, how close do the writers come to imagining our futures? The great artist, Leonardo Da Vinci, designed contraptions that could be considered science fiction of his time. Quite possibly, Artificial Intelligence and computers have their roots in science fiction. Celebrate by watching your favorite sci-fi TV show or movie, or discuss how science fiction became reality. Remember, live long and prosper!

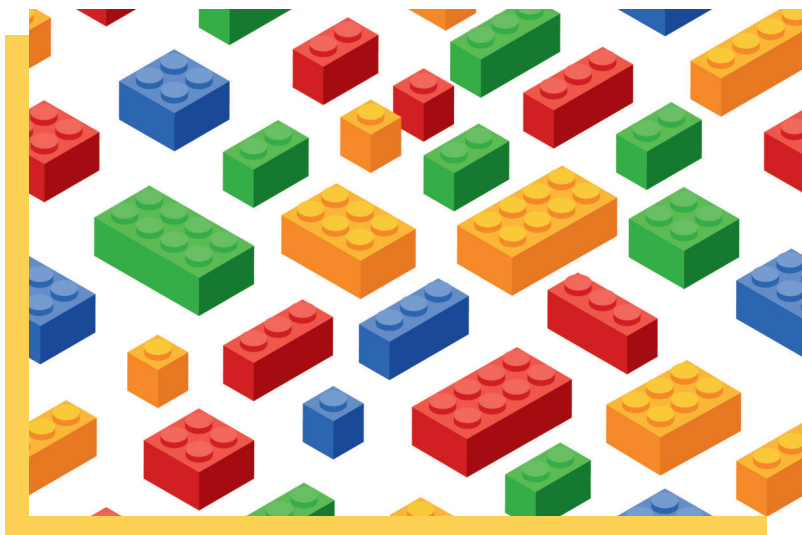


Today in History



In 1890, Alice Sanger made history by becoming the 1st female White House staffer as the secretary to President Benjamin Harrison. Four years later, she was transferred to the United States Post Office Department. In 1930, Sanger was promoted to the department's personnel officer.

senior **living**
activity assistant
powered by **spectrio**



DID YOU KNOW?

From Patent to Playtime: Lego

Danish carpenter Godtfred Kirk Christiansen first submitted his patent for the original Lego brick in 1958. Like no other brick that had come before, this toy brick would have a sophisticated interlocking brick system, making it strong, versatile, and less likely to fall apart when simply knocked over. Today, there are so many Lego bricks in the world that it's estimated that they outnumber people 80 to 1.

TRIVIA

Which US state is known as the "Sunshine State"?

- A** Florida
- B** California
- C** Arizona
- D** Nevada

TODAY'S FUNNY

"I don't trip over things..."

I do random gravity checks!"

TODAY'S WISDOM

"Who looks outside, dreams; who looks inside, awakes."
- Carl Jung

WORD SEARCH

Run It Up The Flagpole

V	Y	M	M	A	B	D	O	F	F	A	L	C	T	C	G	G	O
B	V	J	Y	Z	V	I	D	K	Q	Q	N	H	Y	K	E	M	P
F	R	E	I	X	N	L	P	N	Z	R	N	J	C	G	Z	S	I
G	K	W	Q	S	D	R	Z	N	G	Q	E	A	U	H	S	T	N
G	B	N	V	L	R	L	E	M	L	A	B	A	A	E	J	U	I
D	R	B	Y	C	D	H	M	L	N	D	G	C	C	S	L	S	O
Y	D	N	Z	R	N	B	Q	T	E	S	T	O	R	T	N	N	N
Q	O	X	Y	D	U	T	R	E	S	V	R	N	J	T	O	H	P
H	X	E	N	N	Z	J	F	J	N	P	A	C	Y	I	I	Z	K
V	D	K	O	W	C	X	N	X	O	P	F	N	T	N	T	O	D
I	H	N	I	C	D	J	I	I	P	M	O	C	T	G	A	C	U
S	J	P	S	G	C	S	B	R	S	G	A	J	H	X	V	N	I
A	J	O	I	H	Y	Z	R	Y	E	E	Z	Q	O	M	R	W	V
G	H	L	C	H	T	E	G	D	R	P	C	L	T	Z	E	C	F
J	D	F	E	E	L	H	S	G	R	D	C	A	W	J	S	H	N
L	W	Y	D	Z	B	I	C	G	Y	P	A	I	W	S	B	J	T
K	N	O	V	S	P	G	K	F	C	Y	W	R	V	Y	O	K	X
H	C	C	Z	J	A	D	P	B	F	G	P	T	R	C	U	I	Y

Test

React

Gauge

Feedback

Response

Opinion

Reaction

Process

Trial

Observation

Relevant

Decision

SUDOKU

How To Play:

Each 9x9 box is comprised of 9 smaller 3x3 boxes. Each of these smaller boxes must be filled in with numbers from 1-9. Each row and column of the larger 9x9 box should not have any numbers repeated.

9			7	4			5	6
		6	5	2	1	3	7	9
	5		8		9	1		
2				8	4			7
		3	9	5	7	2	8	
		8						4
1	9	5		7		4		3
6	8		1	3	2			5
7		2		9	5			

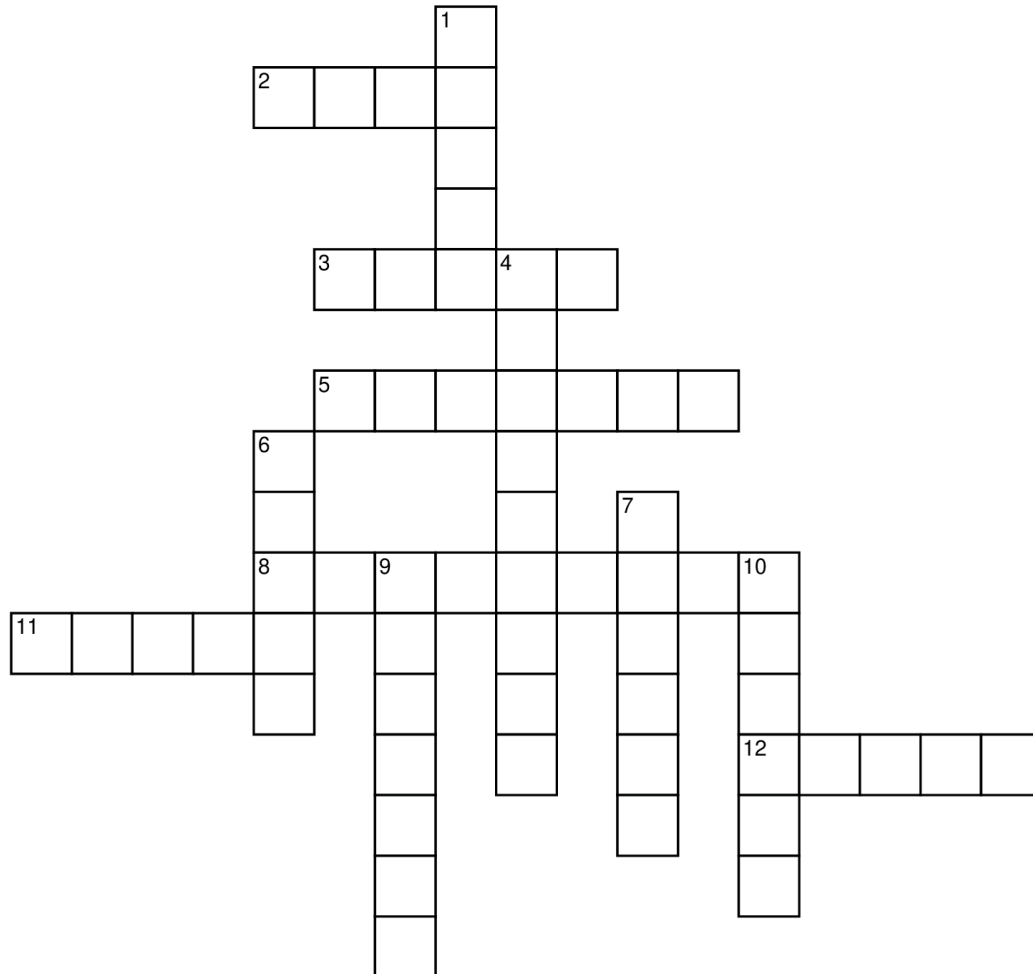
	8	2	6			3	7	5
		3			4	8		
1								
			5			9		7
8			7					6
	4			1	6		2	8
						6		
9	6		4		2		8	3
			1			7	9	

Helpful Tip:

If you get stuck, try asking yourself "Where can I place number X in this row or column?" Scan to see if the number is already in that row, column, or box.

MINI CROSSWORD

Cowboys



Across

- [2] Workhorse that's only part horse
- [3] Huge livestock farm
- [5] Cowboy genre of movie
- [8] Eagles Band song title
- [11] Mr. Ed, e.g.
- [12] Cowboy noose

Down

- [1] Native of Dallas or Austin
- [4] Oprah was sued by them
- [6] Cowboy show
- [7] Burden and support for rider
- [9] Elected top cop
- [10] Wanted man in westerns

CRYPTOGRAM

Each number stands for a letter. The correlating number for 3 of the letters has been provided as a starting point. Find the numbers in the puzzle and write the assigned letter. Single letters and word length are all hints. Be sure to keep track of what numbers are used for each letter to decode the message!

A	B	C	D	E	F	G	H	I	J	K	L	M
---	---	---	---	---	---	---	---	---	---	---	---	---

—	—	5	—	12	—	—	—	—	—	—	—	—
---	---	---	---	----	---	---	---	---	---	---	---	---

N	O	P	Q	R	S	T	U	V	W	X	Y	Z
---	---	---	---	---	---	---	---	---	---	---	---	---

—	—	—	—	25	—	—	—	—	—	—	—	—
---	---	---	---	----	---	---	---	---	---	---	---	---

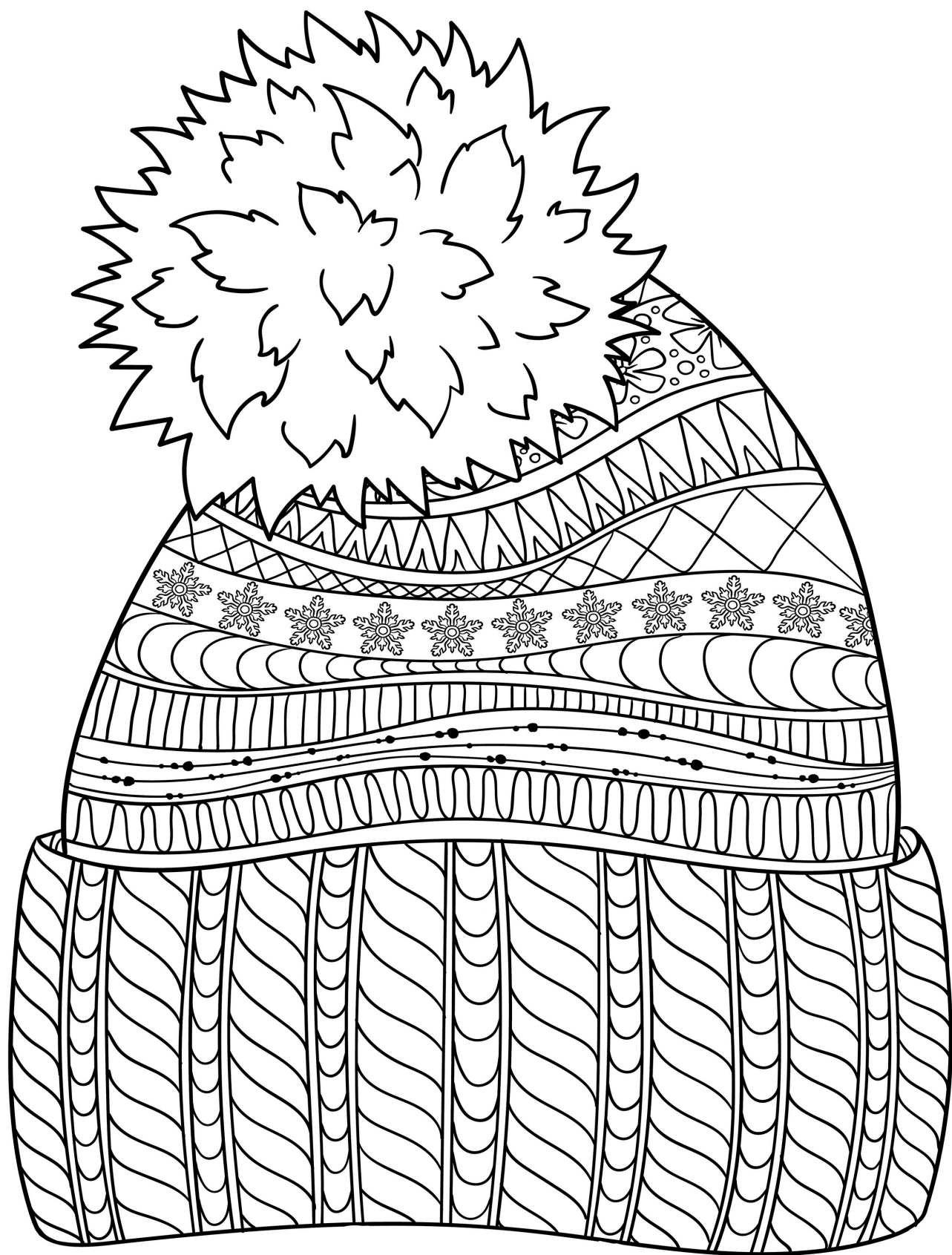
2	4	17	12	24	23	17	12	2	11	4	9
---	---	----	----	----	----	----	----	---	----	---	---

21	10	15	12	24	4	5	4	7	4	25
----	----	----	----	----	---	---	---	---	---	----

4	9	24	2	23	19	12	24	21	12
---	---	----	---	----	----	----	----	----	----

7	23	26	12	2	24	4	17	10	1	12	10
---	----	----	----	---	----	---	----	----	---	----	----

17	10	2	24	12	25	18	23	12	5	12	.
----	----	---	----	----	----	----	----	----	---	----	---



SOLUTIONS

Trivia Answer: A. Florida

The nickname "Sunshine State" was officially adopted in 1970, but it had been in use since the 19th century.

V Y M M A B D O F F A L C T C G G O
 B V J Y Z V I D K Q Q N H Y K E M P
 F R E I X N L P N Z R N J C G Z S I
 G K W Q S D R Z N G Q E A U H S T N
 G B N V L R L E M L A B A A E J U I
 D R B Y C D H M L N D G C C S L S O
 Y D N Z R N B Q T E S T O R T N N N
 Q O X Y D U T R E S V R N J T O H P
 H X E N N Z J F J N P A C Y I I Z K
 V D K O W C X N X O P F N T N T O D
 I H N I C D J I I P M O C T G A C U
 S J P S G C S B R S G A J H X V N I
 A J O I H Y Z R Y E E Z Q O M R W V
 G H L C H T E G D R P C L T Z E C F
 J D F E E L H S G R D C A W J S H N
 L W Y D Z B I C G Y P A I W S B J T
 K N O V S P G K F C Y W R V Y O K X
 H C C Z J A D P B F G P T R C U I Y

A B C D E F G H I J K L M
 10 14 5 19 12 3 8 21 23 16 1 7 17

N O P Q R S T U V W X Y Z
 26 4 18 13 25 2 24 9 15 6 20 11 22

S O M E T I M E S Y O U
 2 4 17 12 24 23 17 12 2 11 4 9

H A V E T O C O L O R
 21 10 15 12 24 4 5 4 7 4 25

O U T S I D E T H E
 4 9 24 2 23 19 12 24 21 12

L I N E S T O M A K E A
 7 23 26 12 2 24 4 17 10 1 12 10

M A S T E R P I E C E.
 17 10 2 24 12 25 18 23 12 5 12

9	2	1	7	4	3	8	5	6
8	4	6	5	2	1	3	7	9
3	5	7	8	6	9	1	4	2
2	1	9	3	8	4	5	6	7
4	6	3	9	5	7	2	8	1
5	7	8	2	1	6	9	3	4
1	9	5	6	7	8	4	2	3
6	8	4	1	3	2	7	9	5
7	3	2	4	9	5	6	1	8

4	8	2	6	9	1	3	7	5
5	9	3	2	7	4	8	6	1
1	7	6	8	3	5	2	4	9
6	2	1	5	4	8	9	3	7
8	3	5	7	2	9	4	1	6
7	4	9	3	1	6	5	2	8
3	1	4	9	8	7	6	5	2
9	6	7	4	5	2	1	8	3
2	5	8	1	6	3	7	9	4

