

# Daily Delight

THURSDAY • AUGUST 28 • 2025

## National Bow Tie Day

The bow tie isn't for everyone, but some people just look right in one. Bow ties go in and out of style and come in many flavors. What's dapper for one is humorous for another, and scholarly for someone else. The bow tie dates back to Croats who would tie a scarf around their necks to hold their shirts closed. This fashion statement found favor in France and spread worldwide.

Both men and women can wear bow ties, but the most famous wearers include James Bond, Bill Nye, Groucho Marx, Orville Redenbacher, newscaster Charles Osgood, oh, and Donald Duck, too! So go ahead and "tie one on" today, or simply clip one on!



## Today in History



In 1986, Tina Turner received a star on the Hollywood Walk of Fame. Dubbed the "Queen of Rock and Roll," she won 8 Grammy Awards over a career spanning 50 years. Turner was inducted into the Rock & Roll Hall of Fame twice, as part of Ike & Tina Turner and again as a solo artist.

senior **living**  
activity assistant  
powered by **spectrio**



## DID YOU KNOW?

### Random Items at the Library of Congress

The Library of Congress is home to a wide variety of unique and unexpected items beyond its vast collections of books and manuscripts. These include the contents of Abraham Lincoln's pockets on the night he was assassinated, 4,000-year-old cuneiform receipts, 18 glass flutes, and even celebrity palm prints. Other strange items include human hair, a 1507 Waldseemüller World Map, and every public tweet posted between 2006 and 2018.

## TRIVIA

What tool is typically paired with a mortar?

- A** Pestle
- B** Grater
- C** Tong
- D** Crusher

## TODAY'S FUNNY

How do you talk to a giant?

*Use big words.*

## TODAY'S WISDOM

*"Just because you can't do everything,  
it doesn't mean you shouldn't do what you can."  
- William J. Clinton*

# WORD SEARCH

## BOWL-A-RAMA



Bowling

League

Ball

Pins

Sport

Lanes

Turkey

Score

Strike

Handicap

Frame

Organization

# SUDOKU

## How To Play:

Each 9x9 box is comprised of 9 smaller 3x3 boxes. Each of these smaller boxes must be filled in with numbers from 1-9. Each row and column of the larger 9x9 box should not have any numbers repeated.

6	2	8	5			4	9	3
			4		2	6	1	5
5			9				8	
	7	5						
2				6				4
9			2			8	7	1
1	5	2				3		8
		7		5			2	
8						9		7

6	8				7		4	5
5	2	9			6	1	8	7
	4	1	5	9		2	3	
				2				
2			8	7	9	6	5	
1	9		6	3	5	8		4
4	7	8	9	6	2	5		
9		2	4				6	8
	5	6	7		1	4		2

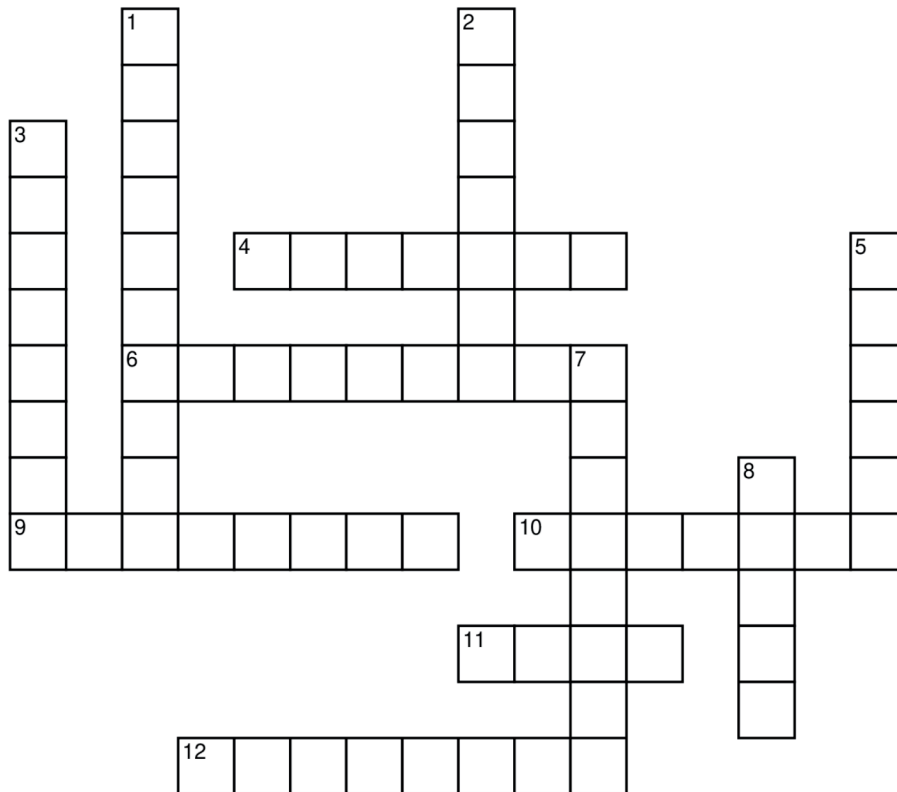
## Helpful Tip:

If you get stuck, try asking yourself "Where can I place number X in this row or column?" Scan to see if the number is already in that row, column, or box.



# MINI CROSSWORD

## Orchards



### Across

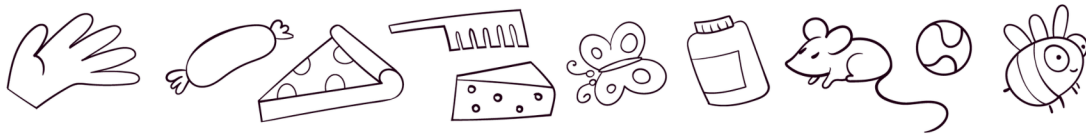
- [4] Gather crop
- [6] Garden supports
- [9] Bathes in warmth
- [10] Firefighters equipment
- [11] Drones
- [12] Bee attractors

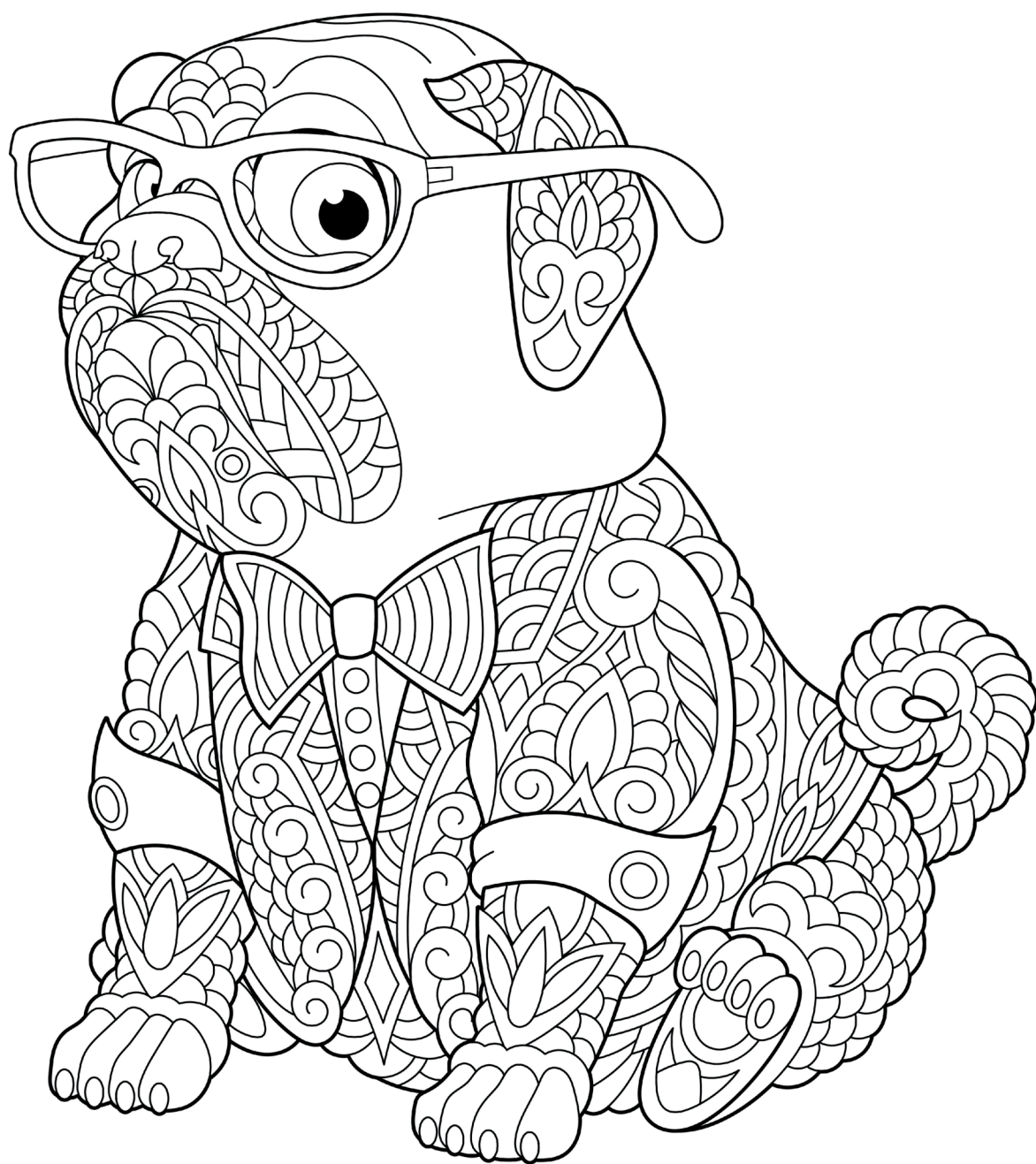
### Down

- [1] Crop watering
- [2] Clippers
- [3] Deere products
- [5] Winesap, e.g.
- [7] Hose attachments
- [8] Barrier

# SEEK AND FIND

Find the hidden objects in the picture.





# SOLUTIONS

## Trivia Answer: A

Nowadays, the mortar and pestle is known as an extremely useful, lo-fi kitchen tool.

6	2	8	5	7	1	4	9	3
7	3	9	4	8	2	6	1	5
5	1	4	9	3	6	7	8	2
4	7	5	3	1	8	2	6	9
2	8	1	7	6	9	5	3	4
9	6	3	2	4	5	8	7	1
1	5	2	6	9	7	3	4	8
3	9	7	8	5	4	1	2	6
8	4	6	1	2	3	9	5	7

A D I O U V G J B Z H M I A L T X L  
 Q K V R Y B N Y O I U S G P X T R Q  
 F P H G B G S L Y O E V B A H Q K T  
 R S Q A B I U V H T M X V C P L A U  
 B S X N S I V E N V S W M I U E N F  
 J R B I E G T K R W W T E D X V Z R  
 P N E Z N C Q O T U X O U N Z K J A  
 I H E A A V K Q S Q X H G A X W Q M  
 N Z C T L M C Q Q J B X A H U H V E  
 S O Y I I C S N L B A M E Y P P Y F  
 P C Y O T P F J E Q L Y L B H V Z Q  
 K N E N C Z R B O W L I N G Y Z Y A  
 D W K R I I A T K P N Q U B M B U H  
 S T R I K E H I X Y Z S C O R E P M  
 I I U Z P T M V H E K A N T H X H P  
 U L T N P V P F Q J S B S P O R T Q  
 E L O Z N V P O W L Y A Y C U M L O  
 M K T J J T O U A M B Y N Q Y D W L

6	8	3	2	1	7	9	4	5
5	2	9	3	4	6	1	8	7
7	4	1	5	9	8	2	3	6
8	6	5	1	2	4	3	7	9
2	3	4	8	7	9	6	5	1
1	9	7	6	3	5	8	2	4
4	7	8	9	6	2	5	1	3
9	1	2	4	5	3	7	6	8
3	5	6	7	8	1	4	9	2

<sup>1</sup>I  
<sup>2</sup>P  
<sup>3</sup>T  
<sup>4</sup>H A R V E S T  
<sup>5</sup>A  
<sup>6</sup>T R E L L I S E  
<sup>7</sup>S  
<sup>8</sup>F  
<sup>9</sup>S U N L I G H T  
<sup>10</sup>L A D D E R S  
<sup>11</sup>B E E S  
<sup>12</sup>B L O S S O M S

