

# Chameleon



# Getting to know...

## the Chameleon

Region & Habitat	Found in Africa, Madagascar, and parts of Asia, the Middle East, and Europe.
Classification	Reptile
Size	Generally range from 0.87 inches (Brookesia nana) to 27 inches (Malagasy giant chameleon).
Nocturnal or Diurnal	Diurnal
Conservation Status	Threatened Endangered
Average Lifespan	Between six months and two decades.
Gestational Period	Between 4 and 9 months for most species
Diet	Flying insects like flies, locusts, and various worms.
Scientific Name	Chamaeleonidae
Hibernate	No, active year-round
Fun Fact	Chameleons have eyes that can move independently of each other, giving them a nearly 360-degree view of their surroundings.

Chameleons inhabit Africa, Asia, Madagascar, and Europe. A prevalent species can be found in Spain, Portugal, and the Mediterranean islands. Some are found in the Middle East, a few islands in the Indian Ocean, as well as India, Pakistan, and Sri Lanka. Chameleons are known for changing their colors for camouflage, but did you know they often change color to warm up or cool down? Darker shades help them absorb heat to warm up. They also often switch colors to communicate with other chameleons, using bright colors to attract potential mates or even warn enemies. And often their coloration often reflects their habitat: green for those in rainforests and lowlands, and brown for those in deserts and savannahs. The chameleon is known for feasting mostly on insects such as locusts, grasshoppers, and crickets. Larger chameleons have been known to eat small birds and even other lizards. Chameleons don't move very fast, however their sticky 2-foot-long tongue can shoot out of their mouth at up to 13 miles an hour, snagging prey they normally would not be able to catch. The chameleon's eyes are among its most distinctive features. Each eye is encased in a scaly, cone-shaped lid, with only a small, circular opening for the pupil. Remarkably, chameleons can rotate and focus each eye independently, allowing them to observe two different objects simultaneously and achieve a complete 360-degree panoramic view. When prey is sighted, both eyes can then converge to focus in the same direction, providing a sharper image.

# Word Search

A N E F P J B L E Y M Y I D E O U F  
D Y M K X L U D L T C M S D L S S F  
D G T R E E S U R M Q Y O C R K O C  
C S W E H H B I U D C U F O S R I Y  
Y Q K K M C E Y E S L O L S D A Z S  
S S Y I I P Y E U F S O K K Q C P J  
K S V I N S E C T S C W J Z M S C Y  
A Q Q S A A N R C A M O U F L A G E  
N L K H T M R V A D C W B Y Y G W W  
Z E B U K W U W U T A F U H O A C F  
I W P G Y E T V I J U M K O B D H L  
R E P T I L E S U E R R Z T M A J Q  
U X M V V O N N U G J U E W V M J S  
X I V A D P G G R A I N F O R E S T  
Y Q B C J O N V R U N T D V H I D Q  
W X F C N O M K U L Z Q I R J Q X L  
S B H B T H Z W V Z I K M L K V O F  
M D G W O Z K G U M Q C N D I Y D W

Reptile

Colors

Tongue

Madagascar

Eyes

Skin

Insects

Mood

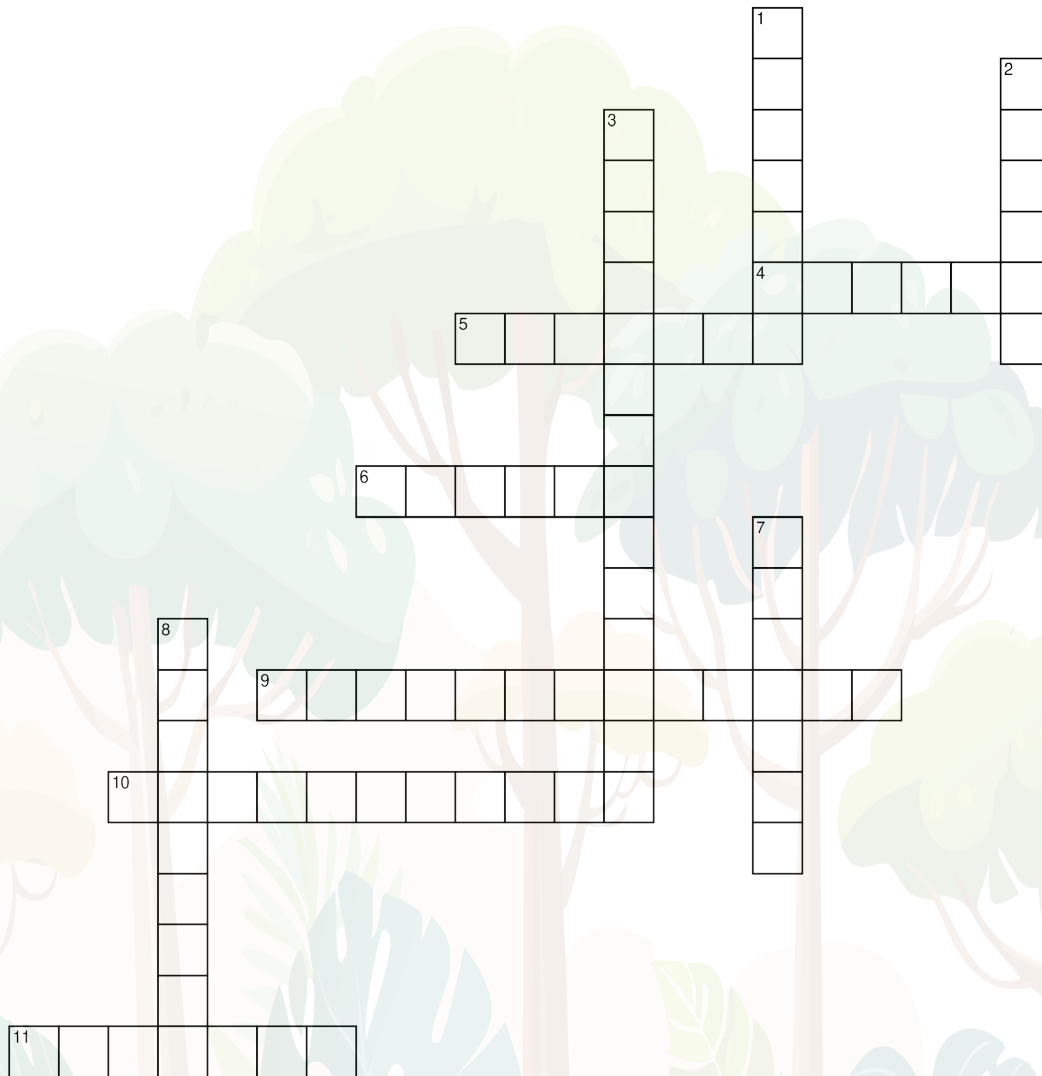
Temperature

Camouflage

Rain Forest

Trees

# Crossword



## Across

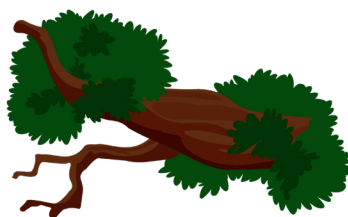
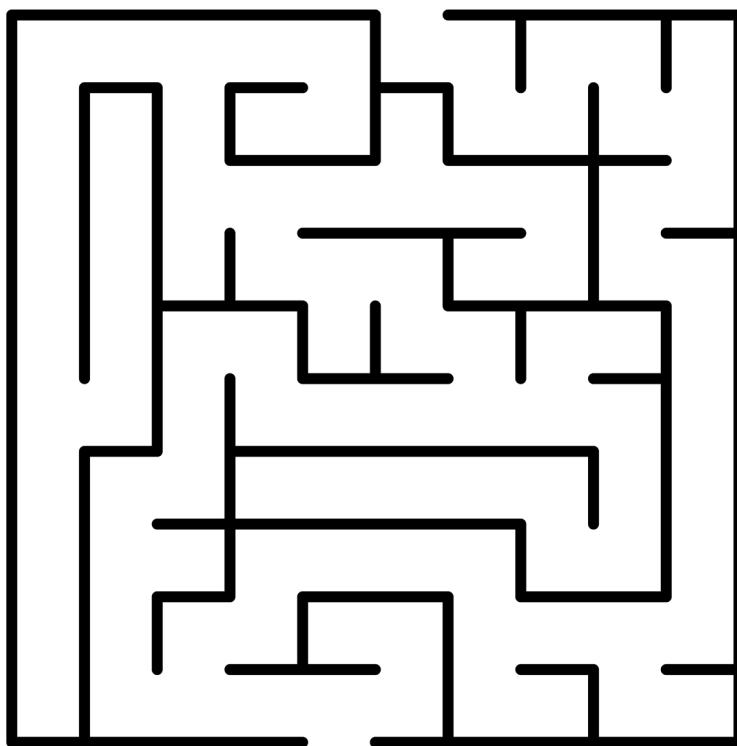
- [4] Found in Africa, Asia, Madagascar, and \_\_\_\_\_
- [5] Larger chameleons eat small birds and other \_\_\_\_\_
- [6] Snags prey with its sticky \_\_\_\_\_
- [9] Their eyes move \_\_\_\_\_ of each other.
- [10] They change color to regulate their \_\_\_\_\_
- [11] Their diet mostly includes flying \_\_\_\_\_

## Down

- [1] Their lifespan can reach two \_\_\_\_\_
- [2] Smallest species is only 0.87 \_\_\_\_\_
- [3] Chameleon's scientific name \_\_\_\_\_
- [7] Chameleons are classified as a \_\_\_\_\_
- [8] Active year-round, they don't \_\_\_\_\_

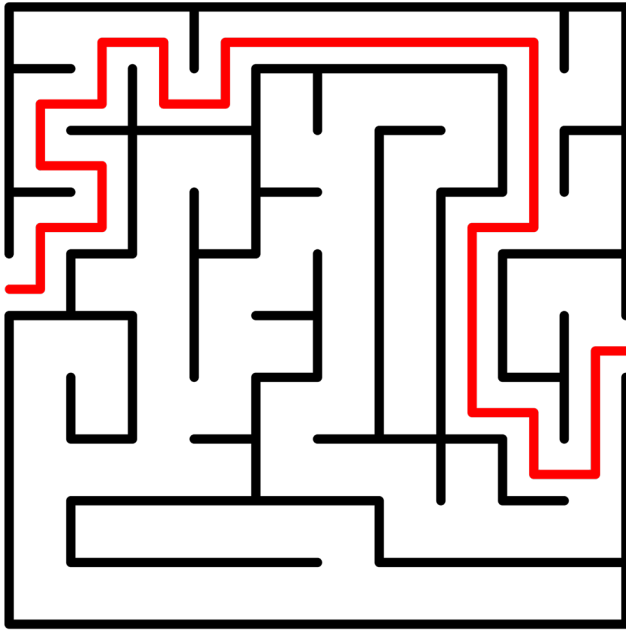


# Maze





# Solutions



A	N	E	F	P	J	B	L	E	Y	M	Y	I	D	E	O	U	F
D	Y	M	K	X	L	U	D	L	T	C	M	S	D	L	S	S	F
D	G	T	R	E	E	S	U	R	M	Q	Y	O	C	R	K	O	C
C	S	W	E	H	H	B	I	U	D	C	U	F	O	S	R	I	Y
Y	Q	K	K	M	C	E	Y	E	S	L	O	L	S	D	A	Z	S
S	S	Y	I	I	P	Y	E	U	F	S	O	K	K	Q	C	P	J
K	S	V	I	N	S	E	C	T	S	C	W	J	Z	M	S	C	Y
A	Q	Q	S	A	A	N	R	C	A	M	O	U	F	L	A	G	E
N	L	K	H	T	M	R	V	A	D	C	W	B	Y	Y	G	W	W
Z	E	B	U	K	W	U	W	U	T	A	F	U	H	O	A	C	F
I	W	P	G	Y	E	T	V	I	J	U	M	K	O	B	D	H	L
R	E	P	T	I	L	E	S	U	E	R	R	Z	T	M	A	J	Q
U	X	M	V	V	O	N	N	U	G	J	U	E	W	V	M	J	S
X	I	V	A	D	P	G	G	R	A	I	N	F	O	R	E	S	T
Y	Q	B	C	J	O	N	V	R	U	N	T	D	V	H	I	D	Q
W	X	F	C	N	O	M	K	U	L	Z	Q	I	R	J	Q	X	L
S	B	H	B	T	H	Z	W	V	Z	I	K	M	L	K	V	O	F
M	D	G	W	O	Z	K	G	U	M	Q	C	N	D	I	Y	D	W

