

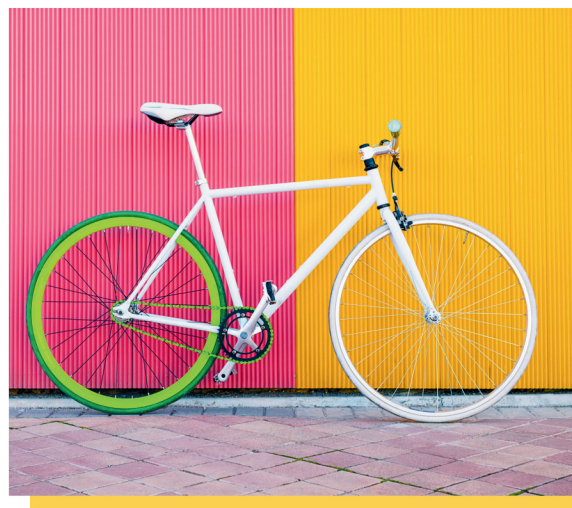
Daily Delight

TUESDAY • JUNE 3 • 2025

World Bicycle Day

It's June third, which means it is World Bicycle Day! Invented over 200 years ago, bicycles come in all shapes, colors, and sizes and are still a popular holiday gift today, especially for kids. Currently, there are over two billion bicycles on our planet, meaning that every one in three people is a bicycle owner. Since bikes are pedal-powered, they are good for the environment, and they are also an excellent form of exercise.

Bicyclists can burn anywhere from 300 to 800 calories an hour, depending on how fast they ride. According to famous comedian and actor Robin Williams, "riding a bicycle is the closest you can get to flying."



Today in History



In 1985, "Larry King Live" debuted on CNN and aired weeknights through December 2010. King's awards and nominations include 2 Peabodys, an Emmy, and 10 Cable ACE Awards. He was also awarded a Lifetime Achievement Award at the 32nd Annual News and Documentary Emmys.

senior **living**
activity assistant
powered by **spectrio**



DID YOU KNOW?

Incredible Edible Ants

Some ants are edible and featured in dishes across Southeast Asia, Africa, and South America. For example, weaver ants add a tang to fish soups in Laos, while fried leaf-cutting ants are widespread in Mexico. Rich in protein, fiber, vitamins, and minerals, ants may be considered a superfood. Furthermore, raising insects for consumption has a lower environmental impact than conventional livestock farming, making them a sustainable protein source as the global population grows.

TRIVIA

Pho is a famous noodle soup from which country?

- A** Taiwan
- B** Nigeria
- C** Vietnam
- D** Haiti

TODAY'S FUNNY

I used to hate
facial hair...

*but then it grew
on me!*

TODAY'S WISDOM

"Jealousy is the fear of comparison."

- Max Frisch

WORD SEARCH

PAUL BUNYAN

T	U	P	W	T	S	C	U	V	C	M	A	T	K
B	U	N	Y	A	N	U	A	U	A	A	K	A	X
X	O	U	P	L	L	F	A	G	N	C	T	M	P
Y	U	A	G	L	N	A	E	E	A	G	C	E	L
U	B	I	U	T	G	R	R	J	D	I	O	R	A
H	P	A	O	A	O	F	R	N	I	L	M	I	I
E	P	O	B	L	U	E	O	X	A	L	P	C	D
R	R	L	K	E	B	T	R	X	N	I	A	A	S
B	F	L	K	M	G	C	P	G	T	V	N	N	H
C	O	L	U	U	R	H	B	P	I	R	I	R	I
F	J	L	A	I	P	E	S	A	A	A	O	B	R
S	A	I	O	G	R	D	A	A	P	Y	N	C	T
A	U	O	O	P	B	X	L	K	L	D	S	T	T
C	L	O	L	N	R	Y	R	K	I	A	G	K	T

GIANT
BLUE OX
LUMBER JACK
PAUL
BUNYAN

BABE
MACGILLIVRAY
PLAID SHIRT
TALL TALE
FOLKLORE

COMPANIONS
FAR-FETCHED
AMERICAN
CANADIAN

SUDOKU

How To Play:

Each 9x9 box is comprised of 9 smaller 3x3 boxes. Each of these smaller boxes must be filled in with numbers from 1-9. Each row and column of the larger 9x9 box should not have any numbers repeated.

		3			8		1	
1	7	2						
	5		6	1			4	
5	9		8					3
					6	2		5
6				5	3	8		
		8			1	4		9
9			3				2	1
		6	9	4				8

	4	5						2
			5	2	8	3		4
		2		4		9		
	9	1	6					
			1	7	4		2	
7							3	
4	3				9	2	8	
	2							5
				8	1			3

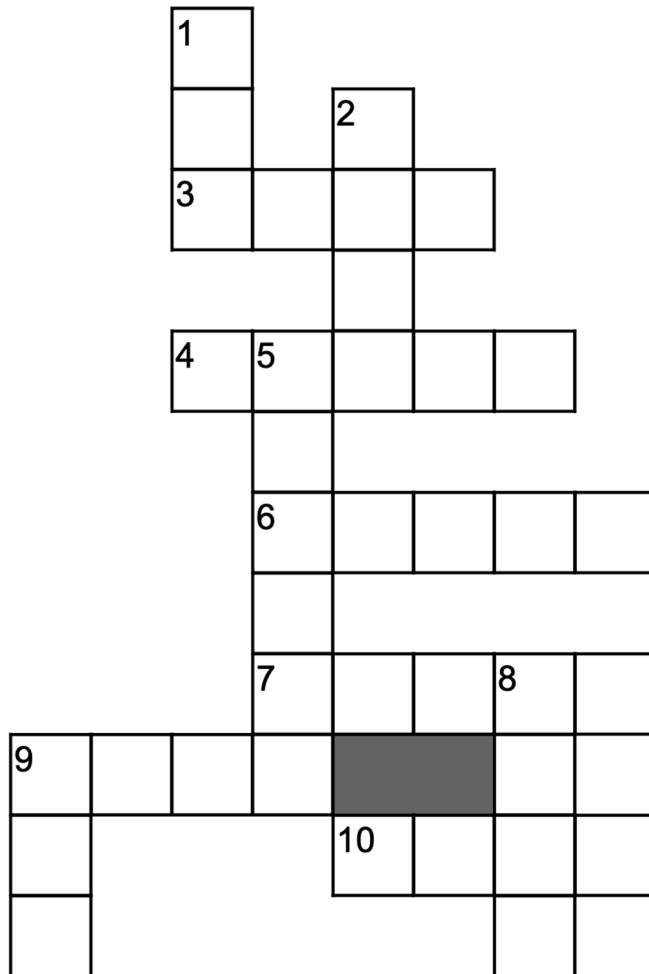
Helpful Tip:

If you get stuck, try asking yourself "Where can I place number X in this row or column?" Scan to see if the number is already in that row, column, or box.

WORD JUMBLE

Every answer uses only the letters in the word:

ADORABLE



Down

1. Twin or Queen
2. The ____ minimum
5. Refill a dishwasher
8. Actual
9. Poor quality

Across

3. "Let's Make a ____"
4. Sourdough is a type
6. Hard work
7. Likened to love
9. Daring
10. "Honey"

Spotlight Trivia

Frank Lloyd Wright

1. Where did Wright grow up?

- | | |
|-----------------|-------------|
| A. Wisconsin | B. Illinois |
| C. Pennsylvania | D. Arizona |

2. Where did Wright briefly attend college?

- | | |
|---------------------------------|----------------------------------|
| A. University of North Carolina | B. Columbia University |
| C. University of Wisconsin | D. Rhode Island School of Design |

3. Which 1894 Illinois home was Wright's first major solo commission?

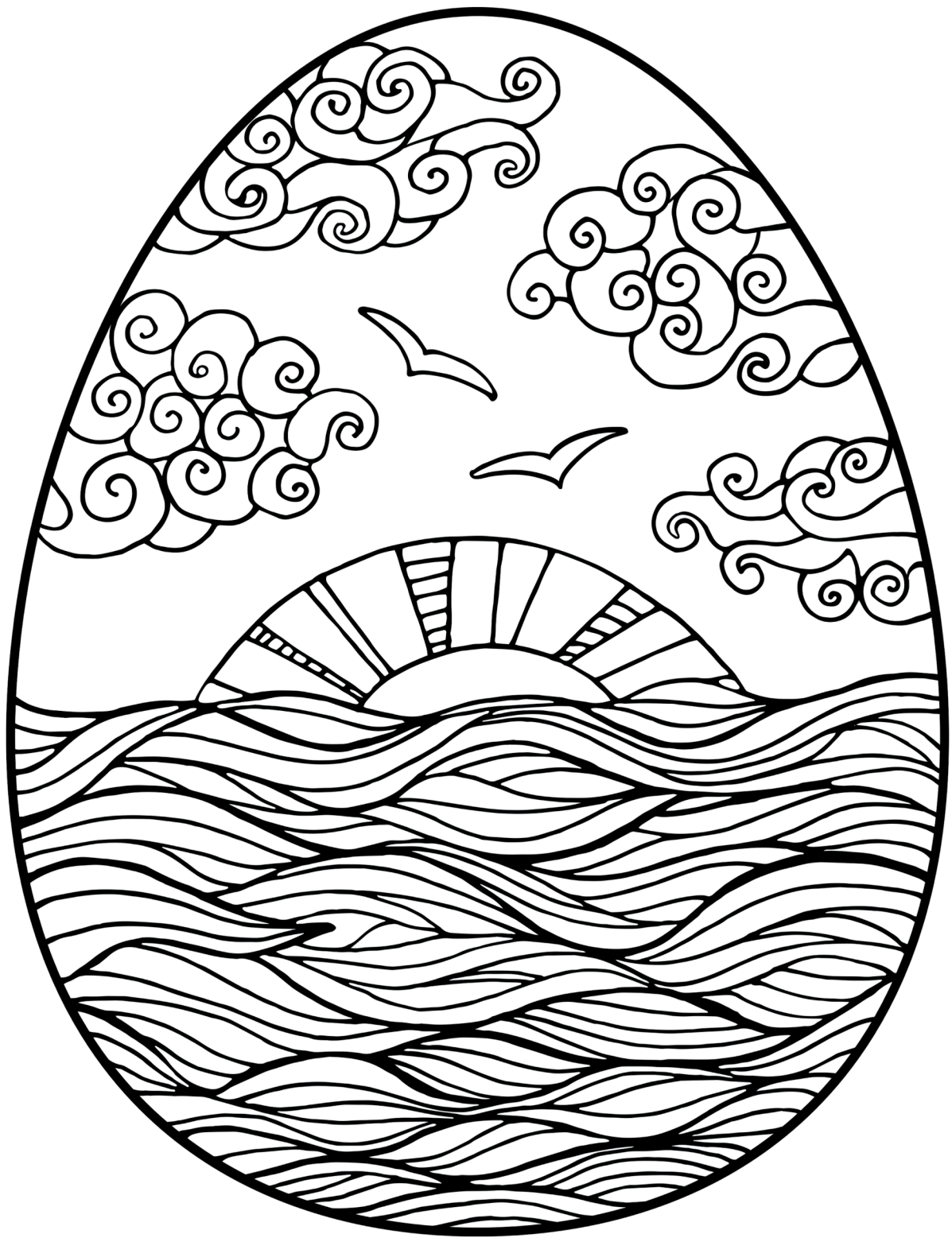
- | | |
|--------------------|----------------------|
| A. Zimmerman House | B. Robie House |
| C. The Gatehouse | D. The Winslow House |

4. What was the location for the proposed "Mile High" building?

- | | |
|-------------|-----------|
| A. New York | B. Tokyo |
| C. Chicago | D. Denver |

5. What is known as Wright's primary architectural style?

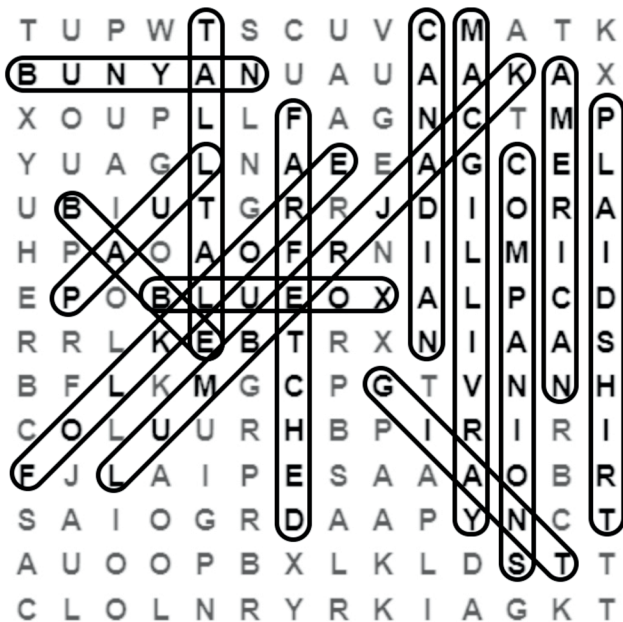
- | | |
|--------------|------------------|
| A. Ranch | B. Prairie |
| C. Craftsman | D. International |
-



SOLUTIONS

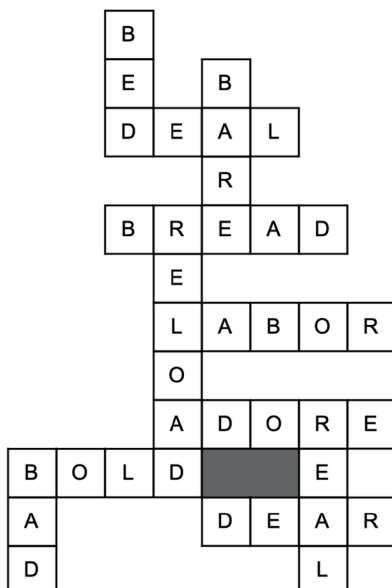
Trivia Answer: C. Vietnam

If you're going to eat pho, the quintessential Vietnamese noodle soup, make sure you pronounce it right — it's "fuh," not "foh."



4	6	3	5	7	8	9	1	2
1	7	2	4	3	9	5	8	6
8	5	9	6	1	2	3	4	7
5	9	7	8	2	4	1	6	3
3	8	4	1	9	6	2	7	5
6	2	1	7	5	3	8	9	4
7	3	8	2	6	1	4	5	9
9	4	5	3	8	7	6	2	1
2	1	6	9	4	5	7	3	8

3	4	5	9	1	7	8	6	2
9	6	7	5	2	8	3	1	4
8	1	2	3	4	6	9	5	7
2	9	1	6	3	5	4	7	8
6	8	3	1	7	4	5	2	9
7	5	4	8	9	2	1	3	6
4	3	6	7	5	9	2	8	1
1	2	8	4	6	3	7	9	5
5	7	9	2	8	1	6	4	3



Spotlight Trivia:

- 1.A
- 2.C
- 3.D
- 4.C
- 5.B