

DESTINATION: NEW ZEALAND



" Kia ora "
WELCOME TO NEW ZEALAND

DESTINATION: NEW ZEALAND

New Zealand is an island country in the southwestern Pacific Ocean. It consists of two main landmasses—the North Island and the South Island—and over 700 smaller islands, covering a total area of 268,021 square kilometers (166,540.5 miles).



Across New Zealand, you can find everything from untamed wilderness to rich culture. Find inspiration in towering mountains and mist-cloaked fjords. Serenity in golden beaches curled around quiet bays. New friends in small towns with big doses of laid-back charm - and sheep, lots of sheep!

Now, what is New Zealand known for?

The Māori world and ‘the story that started it all’ at Manea Footprints of Kupe

Manea, on the shores of Hokianga Harbour, shares the stories and traditions of the great ancestor, Kupe.

Manea is a unique cultural encounter, journeying into te ao Māori, the Māori world. The ancestor Kupe’s arrival in Aotearoa, New Zealand marked the beginning of the nation’s human story. Hokianga is uniquely associated with Kupe as the place he secured for his descendants before returning to the ancient place of origin in the eastern Pacific, Hawaiki. Manea, on the shores of the spectacular Hokianga Harbour, shares warmth and welcome through tribal narratives and traditions left by Kupe.



When the first Lord of the Rings™ movie was released in 2001 New Zealand became known as the 'Home of Middle-earth™'.

New Zealand's dramatic scenery, consisting of golden plains, towering mountains and enchanting valleys, plays a part in creating the mythical world of Middle-earth™ as seen in *The Lord of the Rings™* and *The Hobbit Trilogy™*.

In fact, the landscape is a character itself in these films! When you visit Middle-earth™ you can explore the many film locations and join tours and activities for the chance to see the film locations for yourself and step inside the imaginative mind of Tolkien.



Sheep!

An interesting fact about New Zealand is that it's home to 29 million sheep (according to 2015 statistics) and around 4.6 million people. That's 6 sheep per person (and it used to be more), and the reason for the many sheep jokes made about New Zealanders.

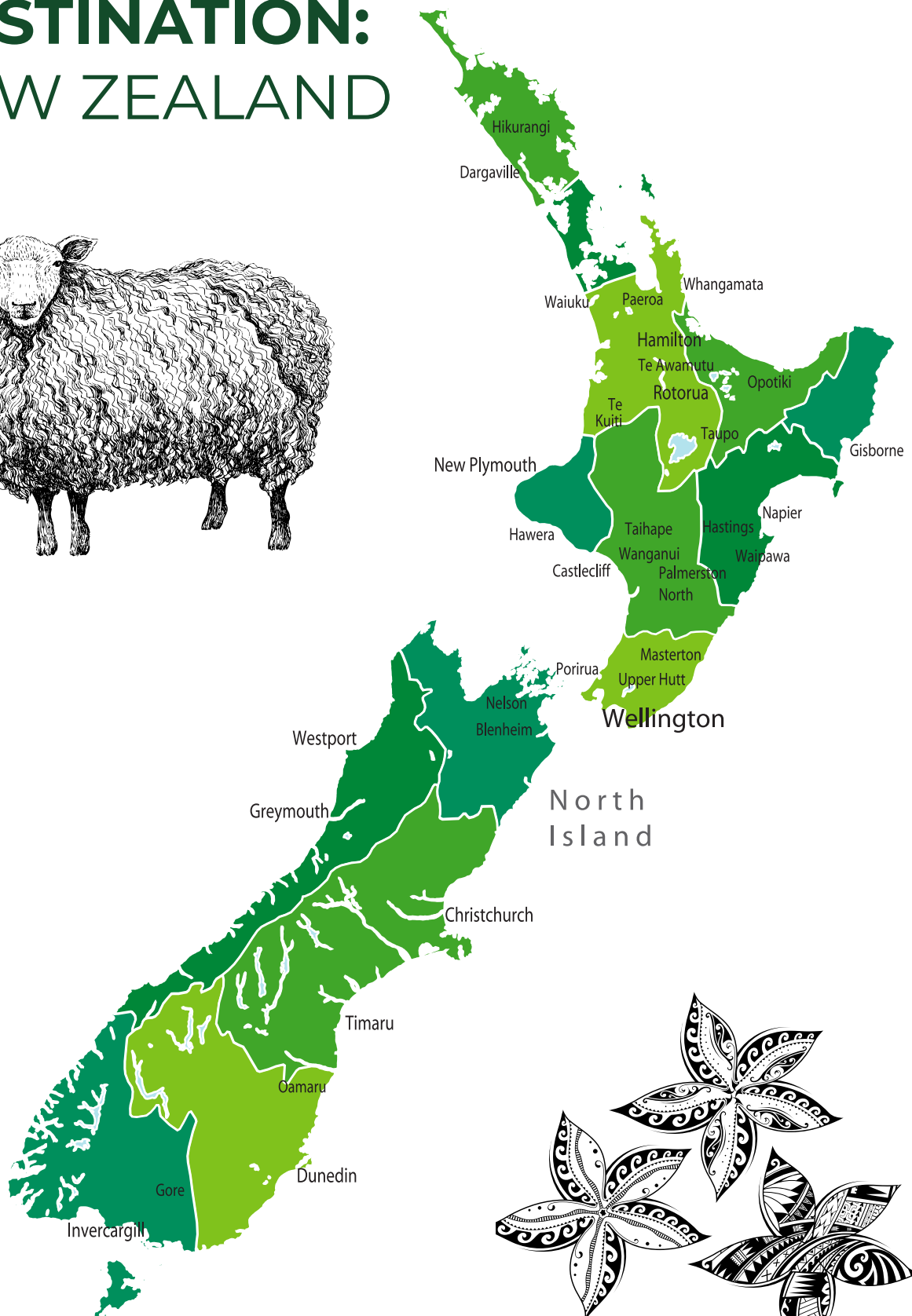
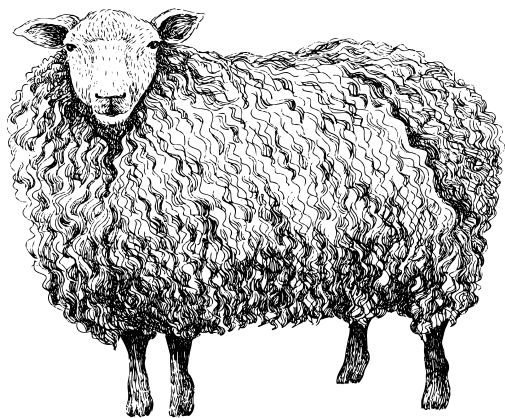
Sheep farms are all over New Zealand, but the South Island, with its drier, more rugged landscapes, high-country stations is rich sheep farming history. Especially the Mackenzie Basin. Named after a rogue

Scottish Shepherd who herded stolen sheep in the 1850's, Mackenzie Country is known for its merino sheep and wool industry.

Several sheep farms in the area welcome tourists to enjoy an authentic farming experience amid in this spectacular setting.



DESTINATION: NEW ZEALAND





Haka

Haka is a traditional war dance or challenge that is an integral part of Maori culture. Haka was originally performed before a battle to intimidate the enemy and is also used as part of welcome ceremonies and other special events.

Haka is performed by New Zealand and other Pacific nations' rugby teams at the beginning of matches.

We have curated a list of videos on our YouTube channel -

Just search

Senior Living Media Activity Assistant Destination: New Zealand Haka

or go to

<https://www.youtube.com/playlist?list=PLUiJO8WI1N2aM2JP4dSIL9mqTV7qbezz>

Photo credit: 2017 Rugby Championship, Bledisloe 1, Australia vs New Zealand, 19th August, ANZ Stadium, Sydney; David Melloy Photography, Wikimedia Commons

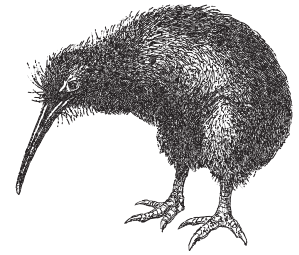
WORD SEARCH: NEW ZEALAND



- | | | | |
|------------|-----------|---------|--------------|
| MAORI | FIORDLAND | SHEEP | WHALES |
| AUCKLAND | HAKA | TEKAPO | AOTEAROA |
| QUEENSTOWN | HANGI | LUPINS | MANUKA HONEY |
| HOBBITON | RUGBY | ROTORUA | MERINO WOOL |
| TONGARIRO | | BUNGEE | |

NEW ZEALAND:

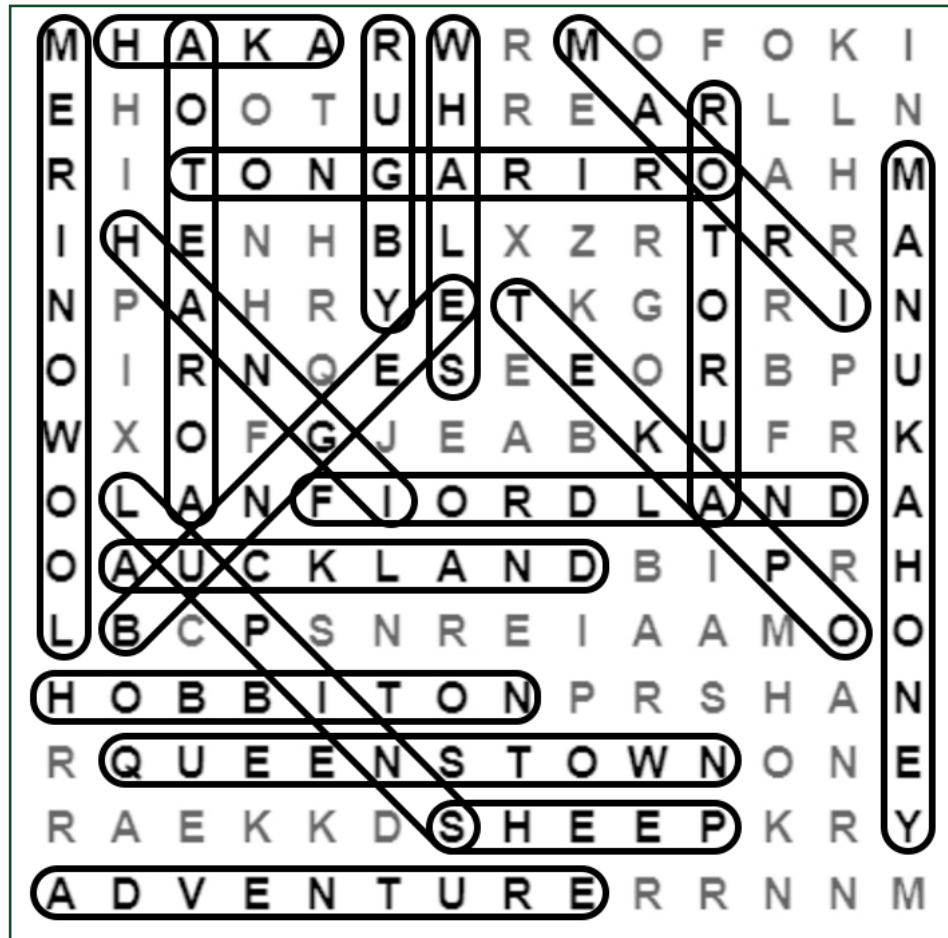
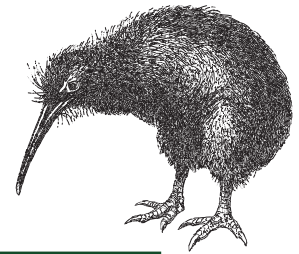
How much do you know?



1. Which New Zealand musician has been playing with Fleetwood Mac since 2018?
 - A. Neil Finn
 - B. Mick Fleetwood
 - C. Christine McVee
2. In which town can you find the Hobbiton?
 - A. Auckland
 - B. Gisborne
 - C. Matamata
3. Which New Zealand movie won the Palme d'Or at the Cannes Film Festival in 1993?
 - A. The Piano
 - B. Once Were Warriors
 - C. Whale Rider
4. Which desert do Australians and New Zealanders both claim as their own?
 - A. Pavlova
 - B. Chimney Cake
 - C. Fruitcake
5. What is the name of the national rugby team of New Zealand?
 - A. The Wallabies
 - B. The Kiwis
 - C. All Blacks
6. What is the second most popular sport in New Zealand?
 - A. Golf
 - B. Cricket
 - C. Soccer/Football
7. In New Zealand, you can eat in a McDonalds located in a:
 - A. Decommissioned DC3 plane
 - B. Inside a UFO-shaped building
 - C. Beneath the town's council chambers
8. In the 2001 census, over 53,000 people marked "something" as their religion. What was this something?
 - A. Jedi
 - B. Maori
 - C. Hobbit

WORD SEARCH & TRIVIA:

SOLUTIONS



1. A. Neil Finn
2. C. Matamata
3. A. The Piano
4. A. Pavlova
5. C. All Blacks
6. B. Cricket
7. A. Decommissioned DC3 plane
8. A. Jedi