

# Daily Delight

FRIDAY • MAY 2 • 2025

## National World Tuna Day

World Tuna Day highlights the importance of maintaining sustainable fishing practices. While many people are familiar with the glasses-wearing cartoon tuna found on a can, did you know there are more than two dozen varieties of tuna, and some of them grow to an impressive size?

Blackfin Tuna can be 3.5 feet long. Albacore tuna can be as long as 4.5 feet long, and Atlantic Bluefin tuna can be up to about 15 feet! But don't let their size fool you. Tuna are swift swimmers and can reach speeds between 44 and 62 miles per hour. Tuna are masters of disguise, able to camouflage their skin to blend in with their ocean surroundings. More than 96 countries around the world participate in the conservation and management of tuna to help stop and prevent overfishing.

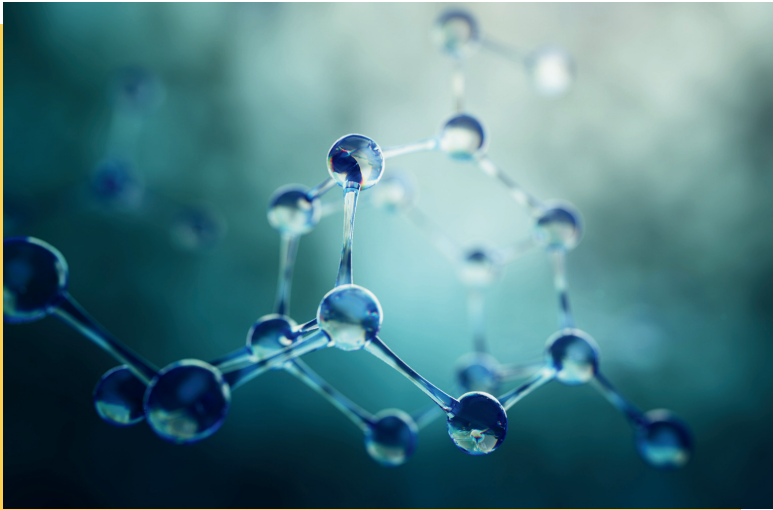


## Today in History



In 1938, American singer Ella Fitzgerald recorded "A-Tisket, A-Tasket" with Chick Webb and his orchestra. The song reached number one on "Your Hit Parade" and she performed the song in the Abbott and Costello film, "Ride 'Em Cowboy" in 1942. Fitzgerald won 13 Grammy Awards.

senior **living**  
activity assistant  
powered by **spectrio**



## DID YOU KNOW?

### From Bandages to Breakthroughs

In 1869, Swiss chemist Johann Friedrich Miescher identified DNA while studying white blood cells, using discarded bandages to extract the cells. He treated them with warm alcohol and enzymes, isolating a gray substance he named "nuclein." By the early 1880s, German physician Albrecht Kossel discovered its acidic properties and nitrogen bases, leading to the substance being renamed "nucleic acid" by the end of the decade.

## TRIVIA

Which iconic 50s comedian was known as "The King of Comedy"?

- A** Lenny Bruce
- B** George Burns
- C** Jerry Lewis
- D** Dean Martin

## TODAY'S FUNNY

What do you call a bee born in May?

*May bee!*

## TODAY'S WISDOM

*"Always stay true to yourself and never let what somebody says distract you from your goals."*

*- Michelle Obama*

## WORD SEARCH

### PILLOW MAGIC

L T P G O T K K L Z R D M L  
O Y M O S E E T G N F W I W  
Z R I U L P E M K E O E L F  
O U N R E Y I A K L R S H T  
P D F O E W F G L L T E C B  
P R O S P E R I T Y U L W R  
V L L W I D P C L R N I A R  
P L K D N W L O H Z E E W L  
O R L L G F D T N I M Y T E  
W O O L O F O T K N L Y X R  
C P R L Y Z U O R O J L E U  
E K E O W G U N E W N R Y X  
R E F R I G E R A T O R O B  
T R A D I T I O N F T U C H

CHILLY  
COLD  
COTTON  
DOWN

FORTUNE  
MAGIC  
PILLOW  
POLYFIL

REFRIGERATOR  
SLEEPING  
TRADITION  
FOLKLORE  
PROSPERITY

# SUDOKU

## How To Play:

Each 9x9 box is comprised of 9 smaller 3x3 boxes. Each of these smaller boxes must be filled in with numbers from 1-9. Each row and column of the larger 9x9 box should not have any numbers repeated.

7		6	1					
8				5			2	
5					6		4	1
			5	4	7	9		
4	2		9			7	6	
	7					1		
	1	4					8	6
		9	6	3				5
	5			2	4		1	

	3		9	1	7			
	8					4	3	
	2				4		9	5
				7	9		8	4
2		4						
					6		5	9
3			2					7
7			1	9				
1		9				6		8

## Helpful Tip:

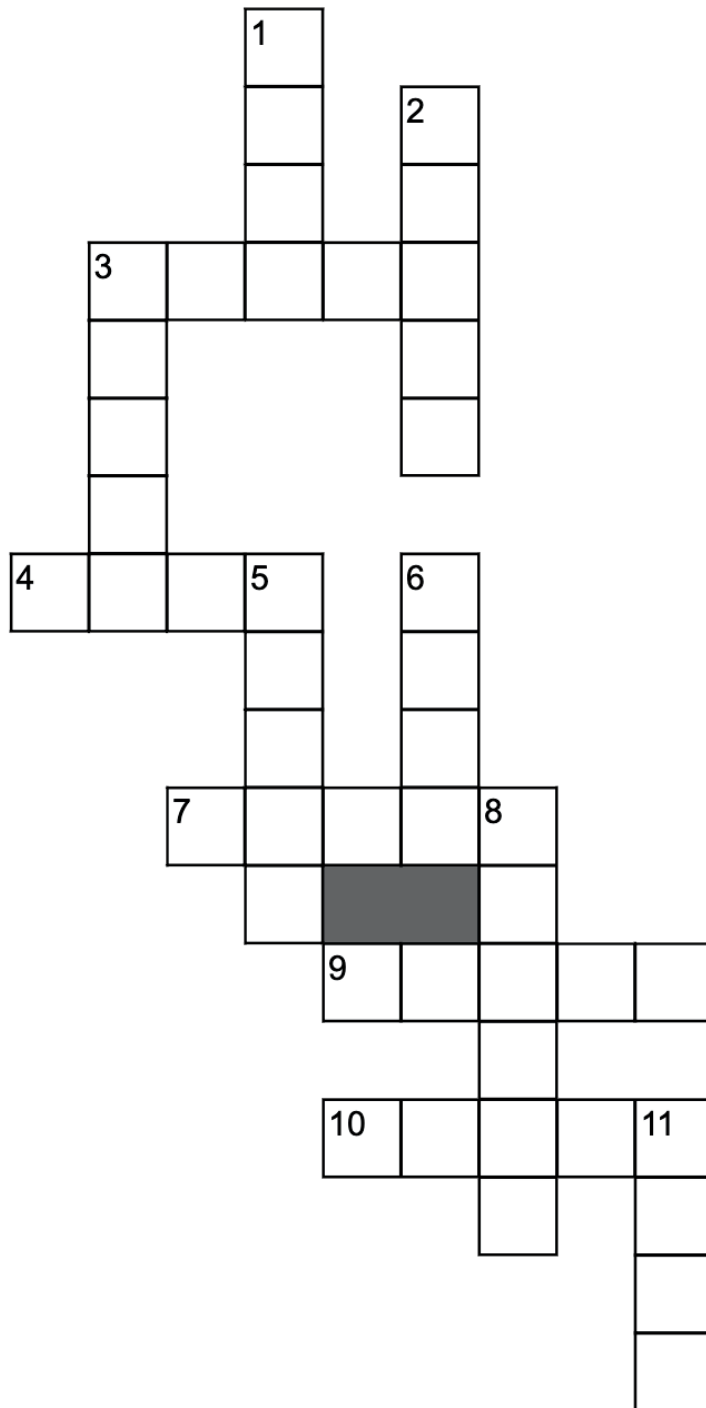
If you get stuck, try asking yourself "Where can I place number X in this row or column?" Scan to see if the number is already in that row, column, or box.



# WORD JUMBLE

Every answer uses only the letters in the word:

**STRAIGHTEN**



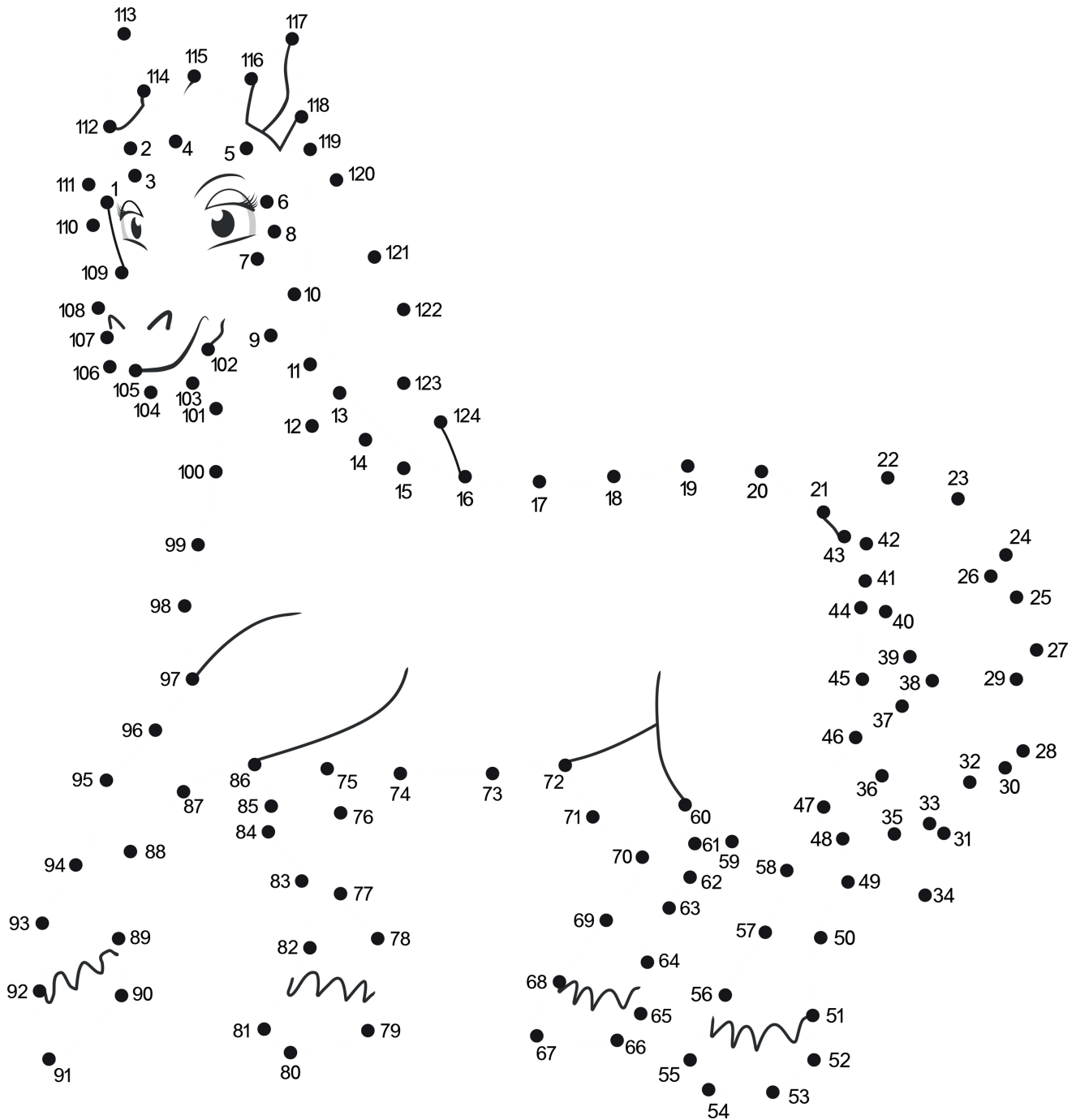
## Down

- 1. Honest living
- 2. Trim a sheep
- 3. Boost spirits
- 5. Compact
- 6. Prince to king
- 8. Intimidating type
- 11. Close by

## Across

- 3. Wash out
- 4. Warmth
- 7. Tunic or blouse
- 9. Waist size
- 10. Amber fields

# Connect the Dots

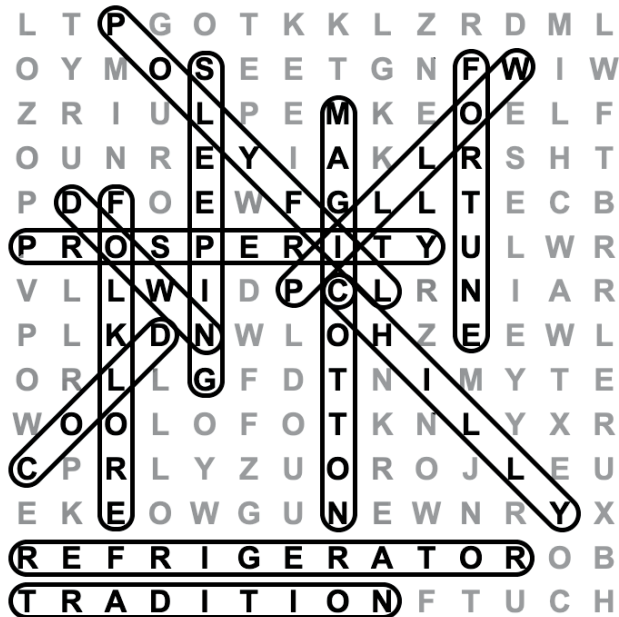




# SOLUTIONS

## Trivia Answer: C.

Jerry Lewis was a renowned comedian and actor, known for his partnership with Dean Martin and his popularity in the 1950s and 1960s.



7	4	6	1	8	2	5	9	3
8	3	1	4	5	9	6	2	7
5	9	2	3	7	6	8	4	1
1	6	8	5	4	7	9	3	2
4	2	5	9	1	3	7	6	8
9	7	3	2	6	8	1	5	4
3	1	4	7	9	5	2	8	6
2	8	9	6	3	1	4	7	5
6	5	7	8	2	4	3	1	9

4	3	5	9	1	7	8	6	2
9	8	7	6	5	2	4	3	1
6	2	1	8	3	4	7	9	5
5	1	6	3	7	9	2	8	4
2	9	4	5	8	1	3	7	6
8	7	3	4	2	6	1	5	9
3	4	8	2	6	5	9	1	7
7	6	2	1	9	8	5	4	3
1	5	9	7	4	3	6	2	8

