

Daily Delight

SUNDAY • MARCH 16 • 2025

National Giant Panda Day

Who doesn't want a day to celebrate the Giant Panda Bear? Whether you prefer the stuffed version or the real-life one, the Giant Panda Bear is the focus of today's holiday.

An endangered species, there are only about 2,000 Giant Pandas in existence, with about 1,850 in the wild and about 300 in captivity. The adorable black and white creature is loved by most people, which is probably why it is the symbol of the World Wildlife Federation, as well as a national emblem of China. After all, who could hate a cuddly bear whose favorite pastime is eating bamboo 14 hours a day?

Take some time today to research how you can support the efforts to protect this endangered species. Happy Giant Panda Day!

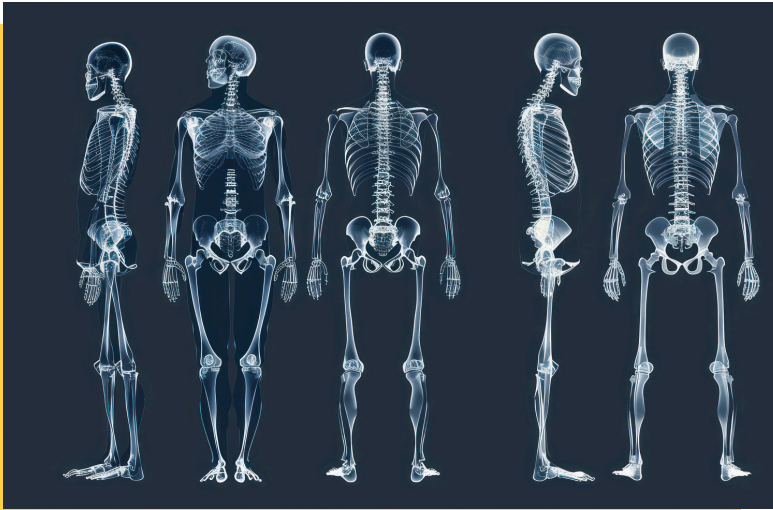


Today in History



In 1934, Katharine Hepburn was among the winners at the 6th Academy Awards. She won for her role in "Morning Glory". Hepburn earned a total of four Oscars for Best Actress. In 1999, the American Film Institute named her the greatest female star of classic Hollywood cinema.

senior **living**
activity assistant
powered by **spectrio**



DID YOU KNOW? Boning Up on the L6

The adult human body typically has 206 bones, but some people have extra features, such as an additional lumbar vertebra (L6). About 10% of the population may have this extra vertebra, which generally has little to no impact on health—most people aren't even aware of it. While there are rare cases of fusion with other bones or medical errors like “wrong-level” surgeries, the presence of an extra L6 vertebra usually does not affect daily life.

TRIVIA

What was used to power the first locomotives?

A Wind power

B Horses

C Steam

D Electricity

TODAY'S FUNNY

I woke up this morning to find two birds sitting in the sun on my back porch...

They were Basking Robins!

TODAY'S WISDOM

"The beautiful spring came; and when Nature resumes her loveliness, the human soul is apt to revive also."

- Harriet Ann Jacobs

WORD SEARCH

BILLION DOLLAR IDEA

P Z Y S U C C E S S F U L C
T C M L N S N U H O S L I X
N Q I H O Q Y A Y L R N F Y
M U S E I N S T E I N A F N
N I N T R O V E R T F T M W
D E E E E E T O R U E B T M
S T R E N G T H S D N U N N
E X T R O V E R T E D F M M
P E R S O N A L I T Y F V R
Q T H F N P L L G A T E S Y
F D D I U L S Y M L S T Y R
D R A S M Q V N A N E N M A
A T T E N T I O N T T E I A
S N A S U L M A N L T P N I

BUFFET
EINSTEIN
GATES
MISNER
ATTENTION

EXTROVERTED
INTROVERT
PERSONALITY
QUIET
SHY

SOLITUDE
STIGMA
STRENGTH
SUCCESSFUL

SUDOKU

How To Play:

Each 9x9 box is comprised of 9 smaller 3x3 boxes. Each of these smaller boxes must be filled in with numbers from 1-9. Each row and column of the larger 9x9 box should not have any numbers repeated.

	7			6	8		1	
2	6	8	5					
		4		2				5
			3		2			8
5		1		7		9		6
8	9		6			7		
3	8				7		4	1
4		9	2				7	
		2			3		8	

			5	4	2			
						3	4	7
9	1						2	
		2						3
3			7	9	8	2		
	4	7	1					9
	5		2	3		7	1	
		6		7		5	3	
2				1		4		

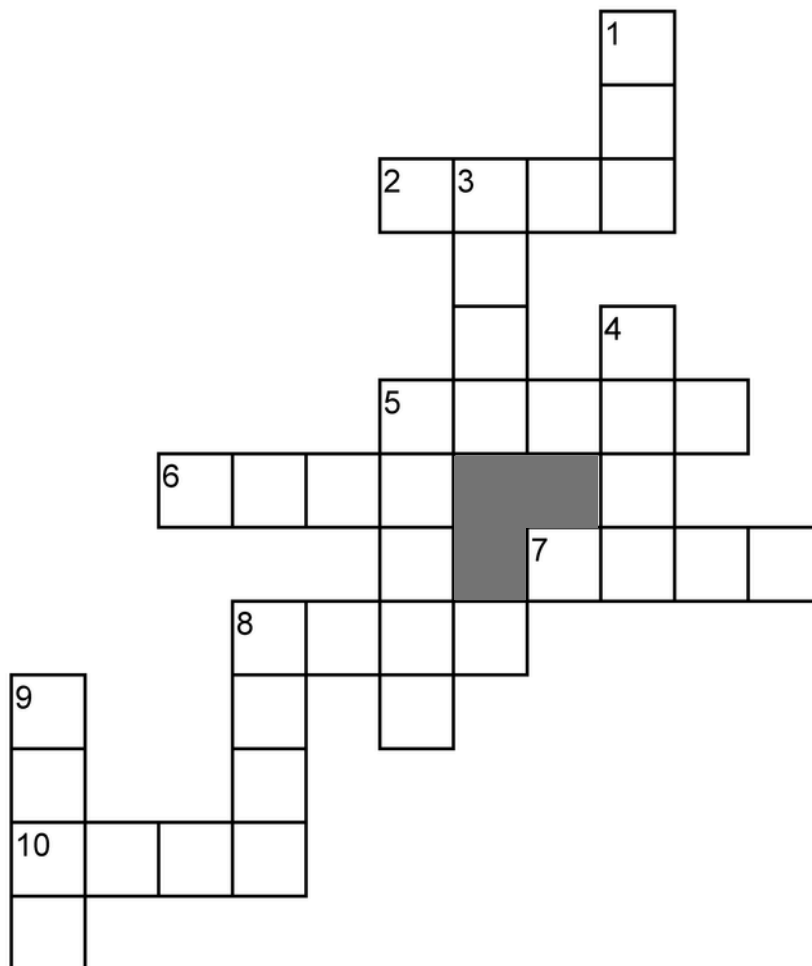
Helpful Tip:

If you get stuck, try asking yourself "Where can I place number X in this row or column?" Scan to see if the number is already in that row, column, or box.

WORD JUMBLE

Every answer uses only the letters in the word:

TRADITIONAL



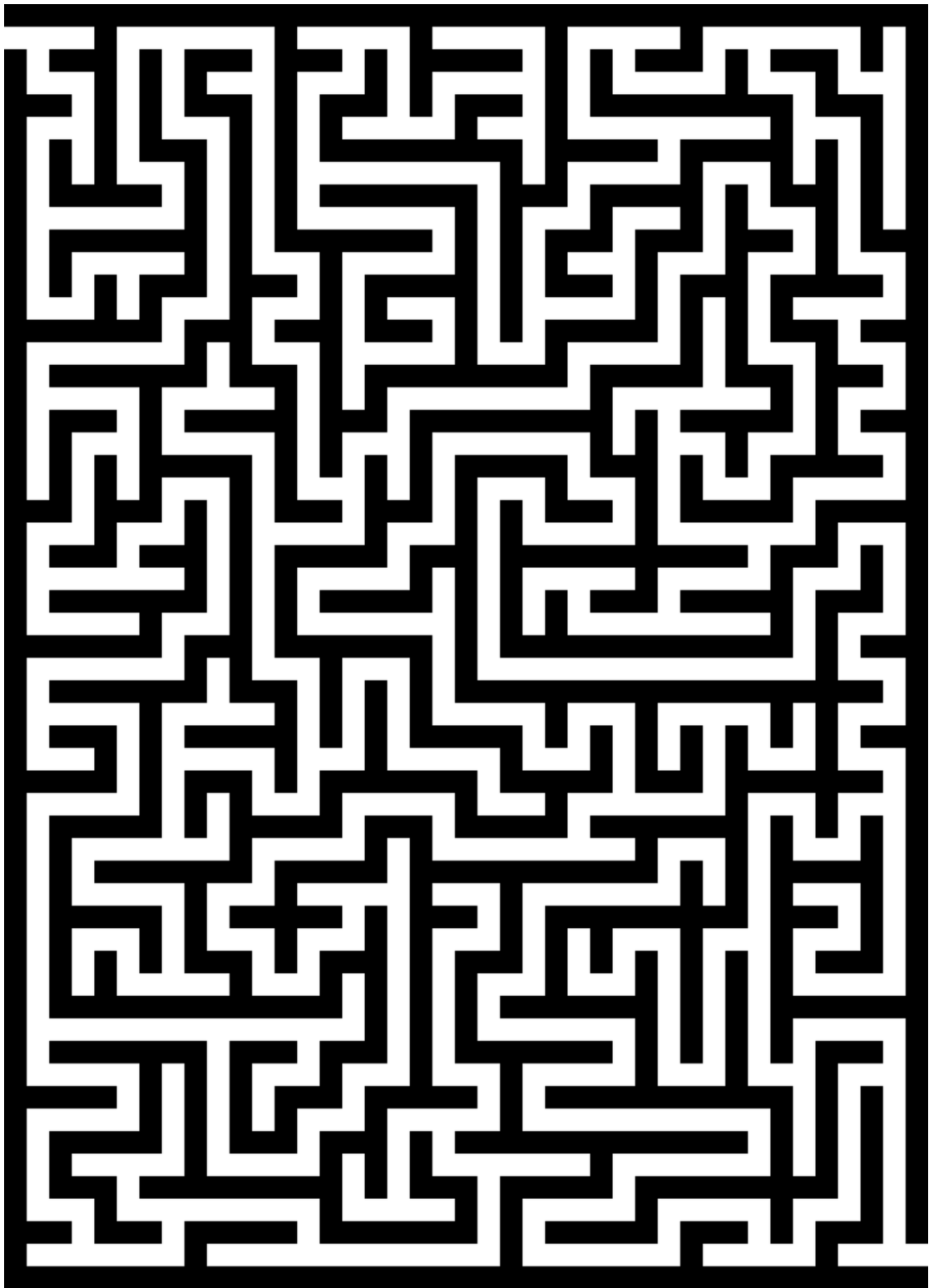
Down

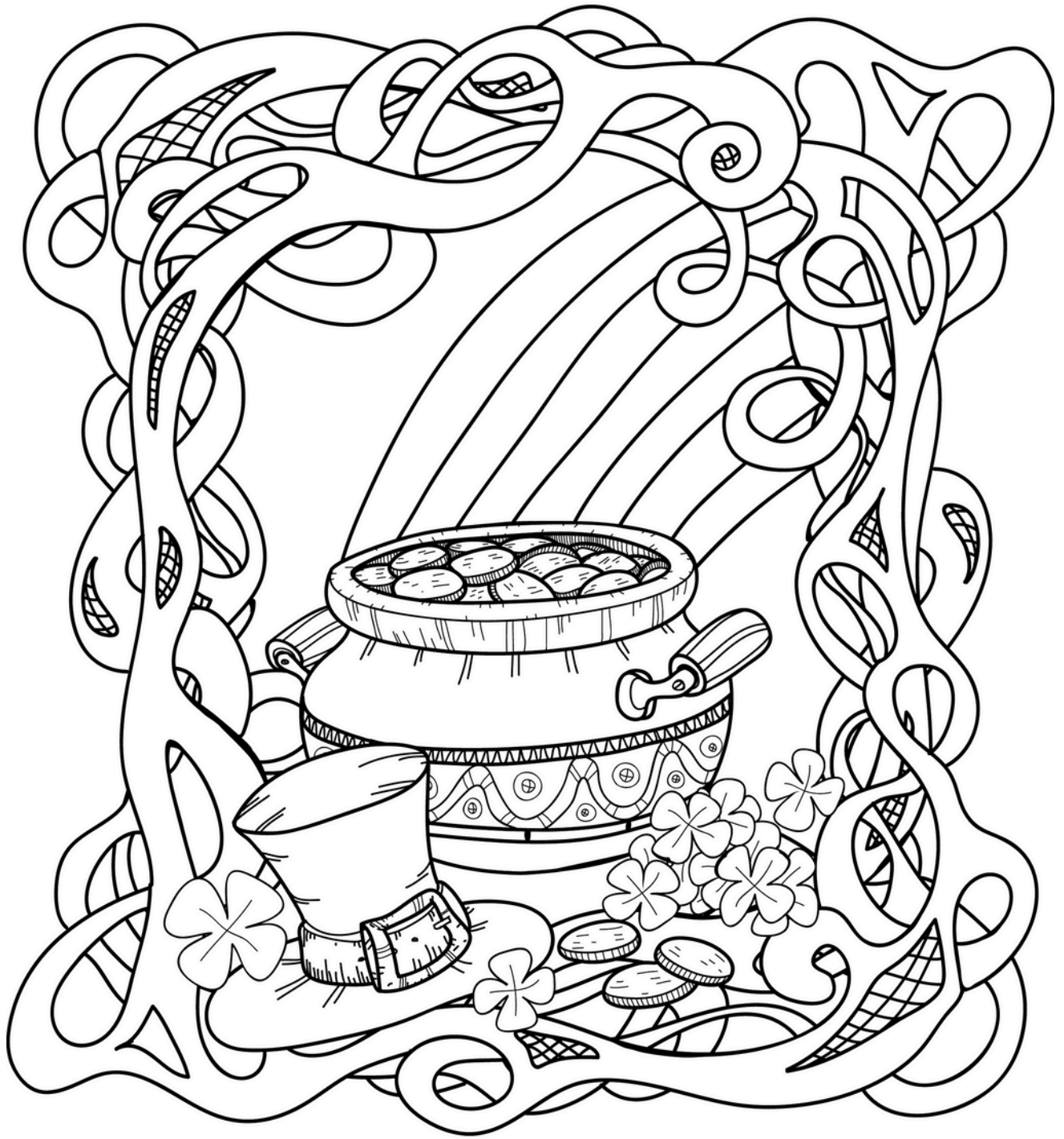
1. Breakfast grain
3. American _____ (show)
4. Statistics is an example
5. Add jewelry
8. Soil
9. Let them know

Across

2. A disturbance by a violent mob
5. Shrine
6. Frog's relative
7. At the end of one finger
8. Can hit a bullseye
10. Laundry leftover

MAZE

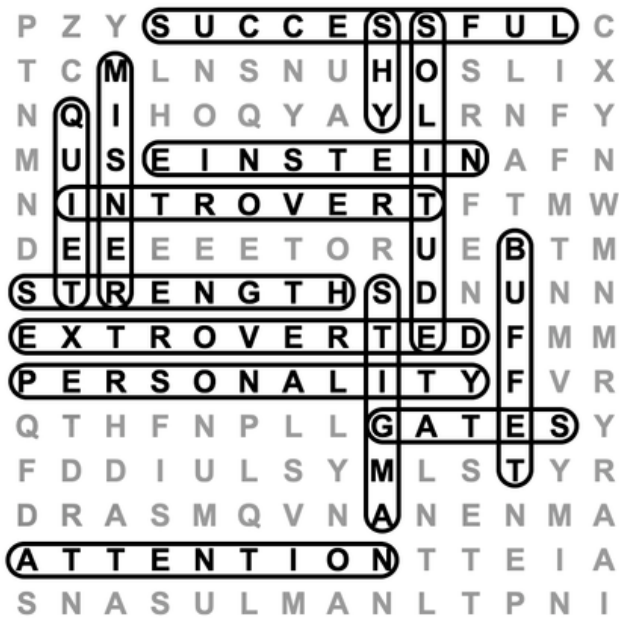




SOLUTIONS

Trivia Answer: C

Richard Trevithick, built the first train in 1804. The train was powered by a steam engine.



9	7	5	4	6	8	3	1	2
2	6	8	5	3	1	4	9	7
1	3	4	7	2	9	8	6	5
6	4	7	3	9	2	1	5	8
5	2	1	8	7	4	9	3	6
8	9	3	6	1	5	7	2	4
3	8	6	9	5	7	2	4	1
4	1	9	2	8	6	5	7	3
7	5	2	1	4	3	6	8	9

7	3	8	5	4	2	9	6	1
6	2	5	9	8	1	3	4	7
9	1	4	3	6	7	8	2	5
8	9	2	6	5	4	1	7	3
3	6	1	7	9	8	2	5	4
5	4	7	1	2	3	6	8	9
4	5	9	2	3	6	7	1	8
1	8	6	4	7	9	5	3	2
2	7	3	8	1	5	4	9	6

