

HAPPY



NATIONAL



GARDEN



WEEK



# GARDEN OF Poetry

## THE GARDEN

Near the mountains is a lovely garden,  
Denver beautiful, haven of the West,  
Through her welcome arch the  
tired tourist  
Finds an oasis of peace and rest.

In this garden there is always sunshine,  
Happiness, good will, and blessings rare;  
Rising in a cloud of benediction  
To descend in fragrance through the air.

May all those who wander through  
this garden  
Breathe this air from yonder snow  
capped crest,  
And enjoy each happy, restful hour  
As the sun sinks in the golden west.

- Susie Kerin

## ROUND & ROUND THE GARDEN

Round and round the garden  
Like a teddy bear  
One step, two step  
Tickle you there!

Round and round the forest  
Like a little deer  
One step, two step,  
Tickle you there!

## IN THE SECRET GARDEN

There is a dream  
in the secret garden,  
where love has grown.

The daffodils,  
with elongated stems,  
arise amidst the stream  
of daisies' faces.

There, they try to reach  
to the sky's embrace,  
but too far it seems  
and so the sky, in its  
blueness,  
reaches down to touch  
their yellow face  
and caress their long  
stalks-  
that then blossom with  
leaves  
that shade the daisies  
from the sun's scorch.

- Sally Jordan



# Spelling GARDEN BEE

Pick the correctly spelled word that would be used in the garden:

DEW

*Do*

TRAWEL

*Trowel*

SPAYED

*Spade*

COMPOST

*Compose*

VEGETABLE

*Vegatable*

FLOWER

*Flour*

GLVES

*Gloves*

WHEELBARROW

*Wheelbarow*

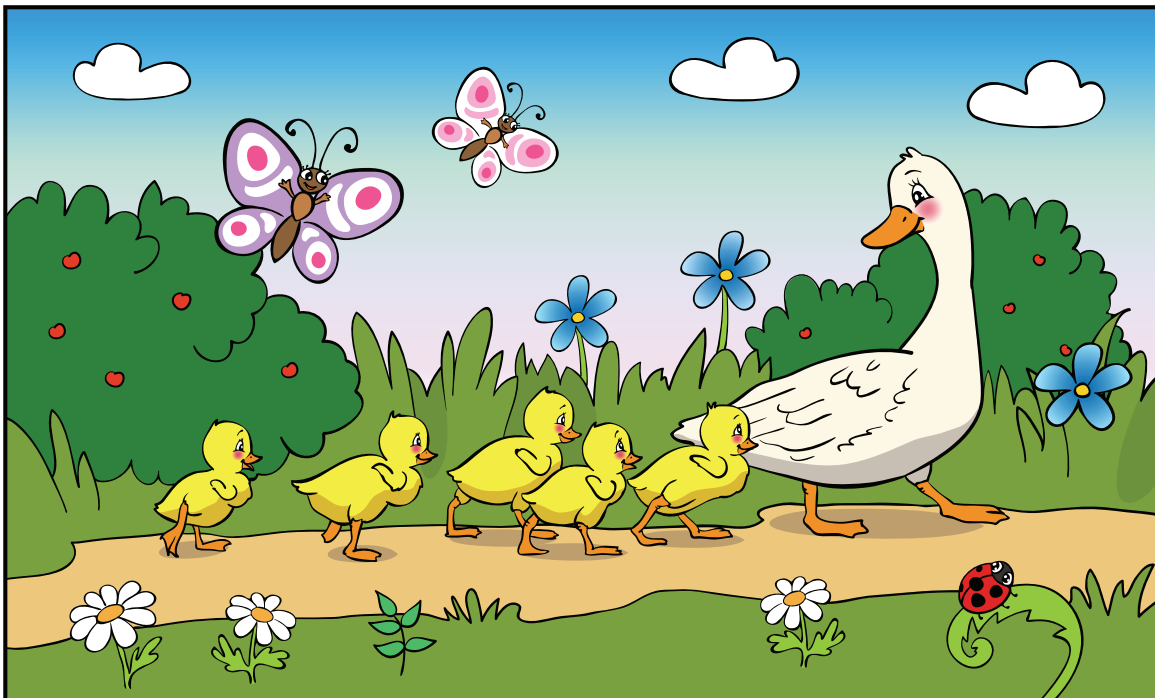
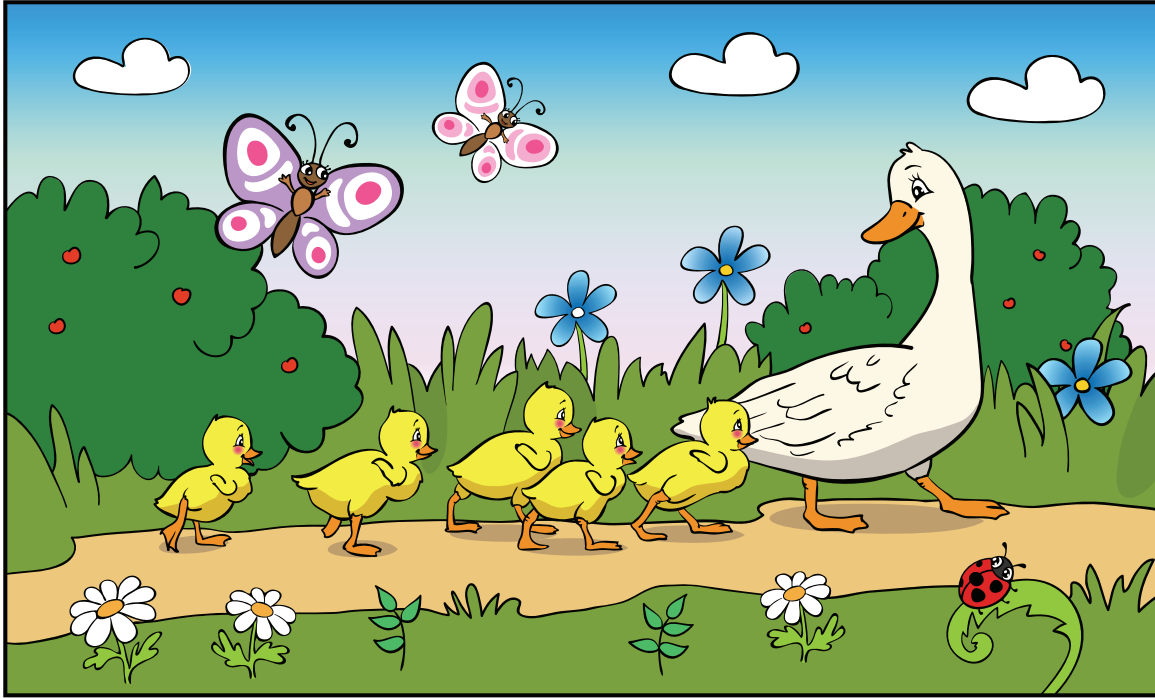
CONTANER

*Container*

LEAVE

*Leaf*

# CAN YOU SPOT 10 differences



# GARDEN Jeopardy

Plants Flowers	Fruits	Vegetables	Healthy Foods	Gardening
<b>100</b> Life form that needs air, water, soil, and sunlight to live	<b>100</b> The only fruit which grows seeds on the outside	<b>100</b> Eating this food group everyday will help you to be and stay healthy	<b>100</b> Categories like Grains, Veggies, Fruits, Dairy, Protein in nutrition	<b>100</b> The substrate most plants grow in
<b>200</b> The parts of the plant above the roots and below the flower	<b>200</b> A fruit common in Italian sauces that is often mistake for a vegetable	<b>200</b> Iron-rich veggie that made the cartoon character Popeye strong	<b>200</b> The food group that bread and rice belong to	<b>200</b> A trowel, rake, shovel and a fork
<b>300</b> Part of the plant that transports water from the roots up	<b>300</b> Because a cucumber has its seeds on the inside	<b>300</b> The part of a plant we eat when we eat salads or greens	<b>300</b> We remove these when we wash fruits & vegetables	<b>300</b> A person who plants and harvests flowers, fruits, and vegetables
<b>400</b> The part of the plant that the petals surround	<b>400</b> An 'appealing' fruit that is high in potassium and is yellow	<b>400</b> Tree-shaped green vegetable that's a great source of calcium for strong bones	<b>400</b> Two methods for keeping fruits and vegetables fresh longer	<b>400</b> A sometimes raised area dedicated to planting flowers or edibles
<b>500</b> Absorbs water from the ground for the stem to transport	<b>500</b> Where the majority of vitamins and minerals are in a potato	<b>500</b> A yellow veggie from which cooking oil is derived that grows on stalks	<b>500</b> A sweet substance that can slow us down and rot our teeth	<b>500</b> The heat and light source on which plants rely to survive and grow

# PLANT Folklore

There are many ancient stories and beliefs about plants as a whole, ranging from old myths to current religious beliefs. There are many backstories regarding rather popular and beautiful flowers and trees, such as the adored Dogwood, the gorgeous Cherry Blossom, and the old Laurel Tree. Even common household plants have interesting backgrounds and myths surrounding them. Plants' symbols show how ancient civilizations perceived them and their features, and how their names and descriptions came to be.

**THE LEGEND OF THE DOGWOOD.** In Christian tradition, the story goes that Jesus was sentenced to death by means of a wooden cross made of Dogwood. According to a Christian legend, the Dogwood tree felt awful for assisting in the crucifixion, and Jesus sensed the tree's pain and transformed the tree from a tall, sturdy forest tree into a smaller and more bush-like plant. The Dogwood today is now associated with Jesus' loving sacrifice, and is said to be in bloom around the time when he was resurrected, which is around Easter, showing its thankfulness towards him.

**THE MEANING OF THE CHERRY BLOSSOM.** Otherwise known as Sakura, the Cherry Blossom Tree, has beautiful pink blossoms. In Japanese culture, the tree is known to symbolize the nature of life, showing its beauty and grace. The tree is a contradiction within itself, symbolizing both birth and death, as well as beauty and violence. In Japan, the tree is the central motif in worship of nature, and is also known to symbolize the short yet sweet life of the samurai. In Shinto or Buddhist folktales, they

are believed to be inhabited by spirits. In Japan, to celebrate their sacredness, they are donned with long, thick ropes called shimenawa.

## THE LAUREL TREE IN GREEK

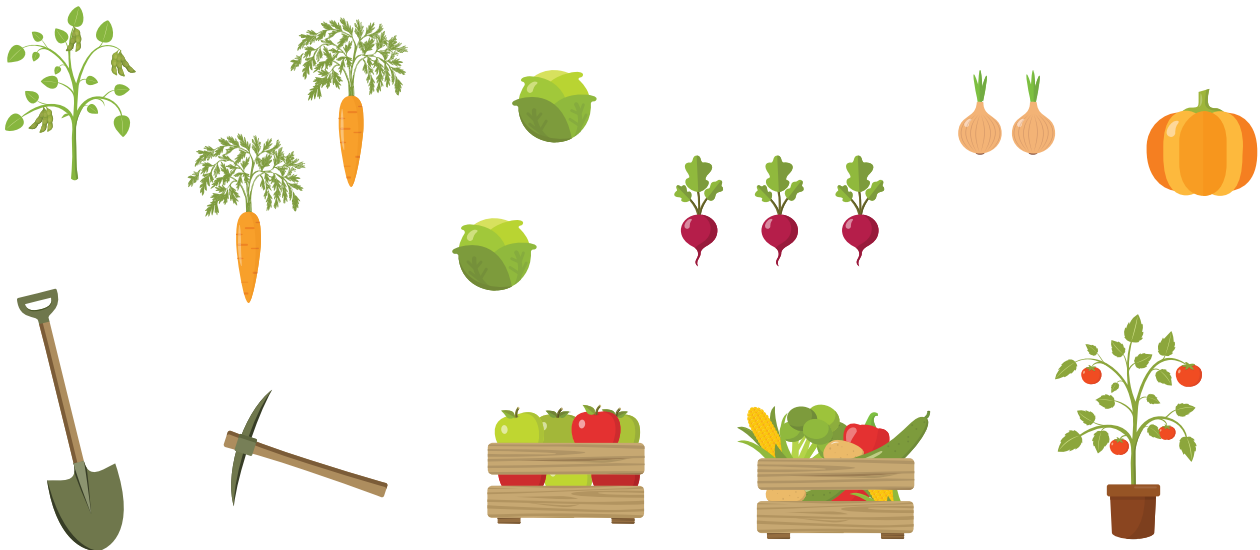
**MYTHOLOGY.** The Greek god, Apollo, mocked the god of love, Eros, insulting the use of his bow and arrow, insulting the use for spreading love, instead of for hunting. Eros, furious towards Apollo, armed himself with two arrows - one of love, and one of lead. He shot Apollo with the arrow instilled with love, forcing upon him feelings of intense adoration towards a local river nymph, Daphne. However, he shot the nymph with the arrow full of lead, filling her with intense disgust and hatred towards the god. Apollo pursued her, begging her to stay, but the nymph continued running, declining the god. Eventually, she ran to the riverbank of her father, Peneas, the god of the river, and begged him to make her one with the earth, forever freeing her of Apollo. He complied, and turned her into a laurel tree, planting herself into the earth. Apollo was heartbroken, and in memorial to her, and made all sorts of items with the branches and leaves, such as the laurel wreath, which was placed upon the heads of victors in such times. He blessed her tree with immortality, which is said to be the reason that the laurel's bay leaves do not decay.

Isn't it fascinating to know that plants we pass every day can carry stories and symbols that are thousands of years old? All in all, the backstories of wildlife foliage is quite interesting, no matter the plant or the point of view you look at.

# plan your own

# GARDEN

Cut out the plants and tools below and paste them in your garden where you'd like them.





# GARDEN VARIETY Jokes

There was once an old man who lived by a forest. The older he grew, the more bald he got, until one day, on his deathbed, he was completely bald. He called his children to a meeting.

He said, "Look at my hair. It used to be so magnificent, but now it's completely gone. My hair can't be saved. But look outside at the forest. It's such a lovely forest with so many trees, but sooner or later, they'll all be cut down and this forest will look as bald as my hair."

"What I want you to do," the man continued, "Is, every time a tree is cut down or dies, plant a new one in my memory. Tell your descendants to do the same. It shall be our family's duty to keep this forest strong."

So they did. Each time the forest lost a tree, the children replanted one, and so did their children, and their children after them. And for centuries, the forest remained as lush and pretty as it once was, all because of one man and his **re-seeding heirline.**

*If you're having a hard day  
but you've got some new  
plants, think about them.  
They're rooting for you.*

**WHAT DO YOU CALL A FLOWER THAT RUNS ON ELECTRICITY?** A power plant.

**WHAT POSITION DOES A BABY PLANT SERVE IN THE ARMY?** Infant tree.

**I WANT TO TELL YOU ABOUT A GIRL WHO ONLY EATS PLANTS.** But you've probably never heard of herbivore.

**I STARTED A COMPANY HARVESTING MOISTURE FROM PLANTS.**

Business hasn't been great, but we're making dew.

**WHY DO PLANTS HATE MATH?** Because it gives them square roots.

**MY WIFE TOLD ME I PLANTED THE WRONG FLOWERS.** Oopsie daisy!

**WHAT IS THE MOST FRIGHTENING PLANT?**  
BamBOO!!!



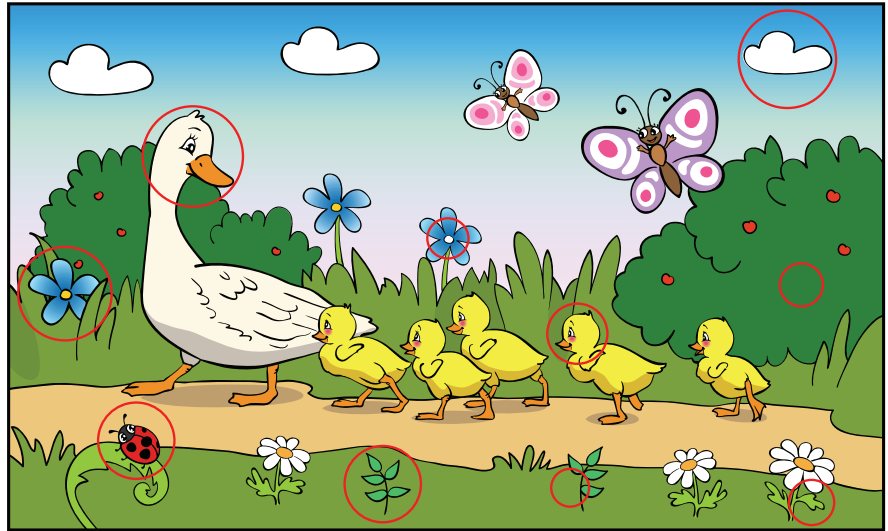


# Answers

## PAGE 2

Dew  
Trowel  
Spade  
Compost  
Vegetable  
Flower  
Gloves,  
Wheelbarrow  
Container  
Leaf

## PAGE 3



## PAGE 4

100 What is a plant/flower/tree?  
100 What is a strawberry?  
100 What are vegetables and fruits?  
100 What are the five food groups?  
100 What is soil?  
200 What are the stem and leaves?  
200 What is a tomato?  
200 What is spinach?  
200 What are grains?  
200 What are gardening tools?  
300 What is stems and veins?  
300 Why is a cucumber considered a fruit and not a vegetable?  
300 What are leaves?

300 What are dirt, insects and pesticides?  
300 What is a gardener?  
400 What are the reproductive parts of flowers?  
400 What is a banana?  
400 What is broccoli?  
400 What is freezing or canning?  
400 What is a garden bed?  
500 What is the root of a plant?  
500 What is the skin of a potato?  
500 What is corn?  
500 What is sugar?  
500 What is the sun?