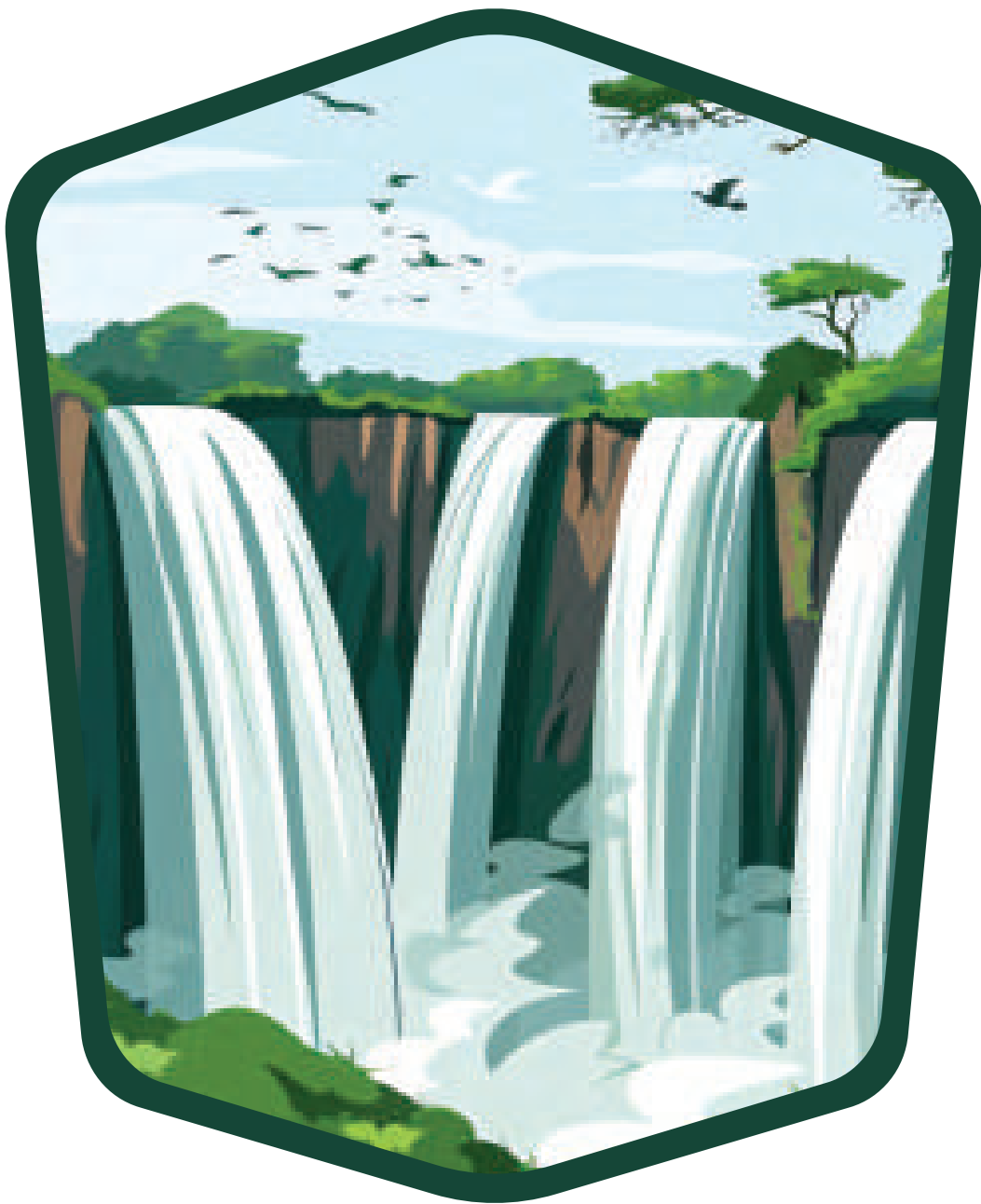


MOSI-OA-TUNYA

ZAMBIA



MOSI-OA-TUNYA



Mosi-oa-Tunya National Park, a UNESCO World Heritage site in Zambia, is home to many natural wonders. Situated on the Zambezi River, the Mosi-oa-Tunya National Park is 25 miles across, and is home to one half of Victoria Falls, the most famous series of waterfalls in the world. Victoria Falls is known for its natural beauty, but also for the mist that rises from the bottom of the falls, and the thunderous noise of the falling water, befitting of the Mosi-oa-Tunya name, which translates to

“The Smoke Which Thunders.” The spray from the falls rises higher than the Empire State Building, can be seen from 31 miles away, and can be heard from almost 25 miles away! The mist created at the base of the falls coupled with the reflecting sunlight or moonlight makes the appearance of rainbows a stunning, natural occurrence. Victoria Falls features the world’s largest sheet of falling water, cascading down from a height of 354 feet and stretching an impressive 5,600 feet wide. The falls are so large, that the five waterfalls that make up Victoria Falls straddle two countries—Zambia and Zimbabwe, and they entice over a million visitors each year, and remain one of Africa’s most visited sites.

Victoria Falls Bridge

To cross the Zambezi River and to travel from Zambia to Zimbabwe, tourists and locals alike venture over the Victoria Falls Bridge. Originally built in 1905 by Cecil Rhodes, the bridge links the towns of Victoria Falls, Zimbabwe, and Livingstone, Zambia. Made of steel, the bridge spans 650 feet, and can be crossed by car, by railway, or on foot. Visitors can experience a guided tour that focuses on the construction of the bridge and also features a small museum on the Zambian side. Adventure seekers can also zip-line and bungee jump from the bridge.



Bakota Gorge

Located just downstream from Victoria Falls, the Bakota Gorge is known for its class IV and V rapids, perfect for a white-water rafting adventure. For nature lovers, the area is rich in both wildlife and vegetation, and the steep cliffs, some reaching 850 feet, offer a breathtaking view of the surrounding area, including the falls.

Wildlife

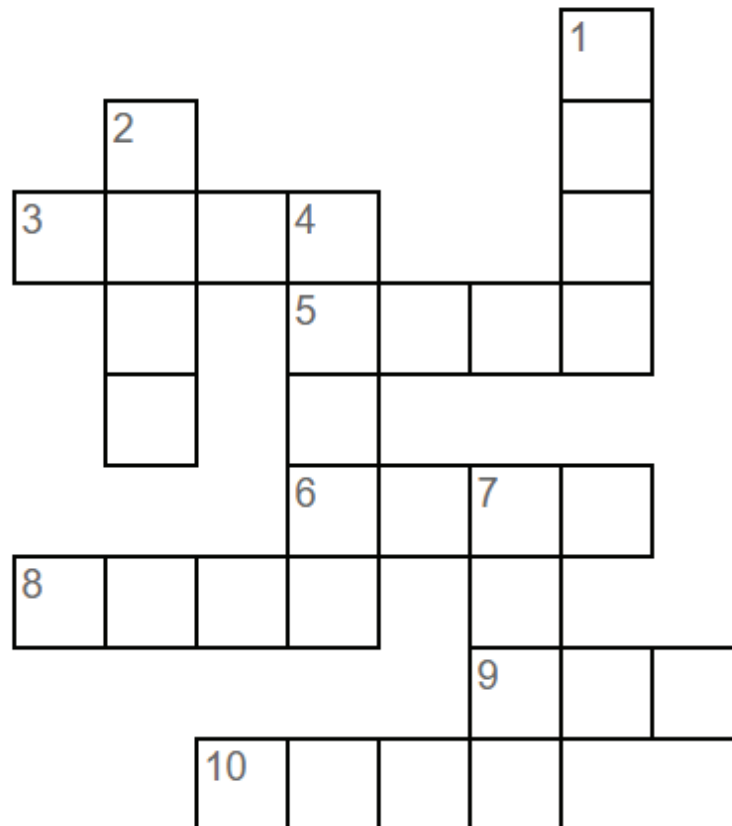


In the Mosi-oa-Tunya National Park, wildlife abounds. Safaris are available for visitors who crave an adventure to witness elephants, wildebeest, zebra, monkeys, baboons, buffalo, giraffe, impala, and hippos in their natural habitat. The park is also the only wildlife area in Zambia where the unique white rhinos roam. These endangered animals are protected from poachers by the Department of National Parks and Wildlife guards.

Word Jumble

Every answer uses only the letters in the word:

Adventure



Across

- 3. Performance by 2 people
- 5. Extremely excited recommendation
- 6. Hoofed animal
- 8. Ill-mannered
- 9. Primary color
- 10. Young adult

Down

- 1. Opposite of false
- 2. Ancient germanic alphabet
- 4. Buying and selling goods
- 7. Obtain money

Word Search

V P P K X B U U Q J P S T C J
P F U D M A S Q L H Z K O T A
A O P F M K L H W Q A V S V M
O I O U X O L B R E M H T X B
K I S N Z T A R I L B P R H S
K R C E Z A F L V E I M M Q A
T H A S A G R P E P A O P F F
V E D C M O E F R H J E B W A
B Q V O B R T O T A H W N I R
X J E M E G A P M N F B J E I
R S N N Z E W U A T H A V G A
T C T A I H X B K S Q B V D G
S X U N U Z J R R U B M Q I R
I N R H E U M W J Q S I I R H
M W E Y Q W D X J L M Z N B C

Waterfalls

Bridge

Elephants

Safari

Zambia

Zimbabwe

Bakota Gorge

Adventure

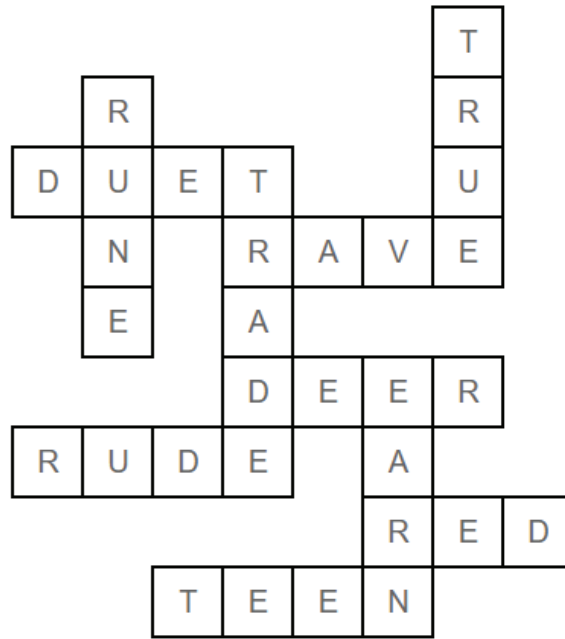
UNESCO

Zambezi

River

Mist

Solutions



V	P	P	K	X	B	U	U	Q	J	P	S	T	C	J
P	F	U	D	M	A	S	Q	L	H	Z	K	O	T	A
A	O	P	F	M	K	L	H	W	Q	A	V	S	V	M
O	I	O	U	X	O	L	B	R	E	M	H	T	X	B
K	I	S	N	Z	T	A	R	I	L	B	P	R	H	S
K	R	C	E	Z	A	F	L	V	E	I	M	M	Q	A
T	H	A	S	A	G	R	P	E	P	A	O	P	F	F
V	E	D	C	M	O	E	F	R	H	J	E	B	W	A
B	Q	V	O	B	R	T	O	T	A	H	W	N	I	R
X	J	E	M	E	G	A	P	M	N	F	B	J	E	I
R	S	N	N	Z	E	W	U	A	T	H	A	V	G	A
T	C	T	A	I	H	X	B	K	S	Q	B	V	D	G
S	X	U	N	U	Z	J	R	R	U	B	M	Q	I	R
I	N	R	H	E	U	M	W	J	Q	S	I	I	R	H
M	W	E	Y	Q	W	D	X	J	L	M	Z	N	B	C

