

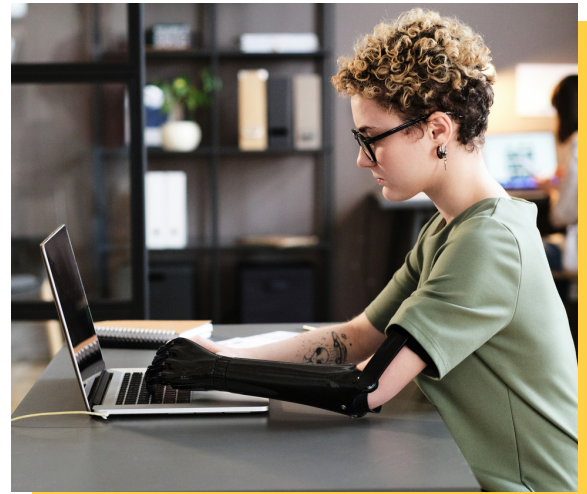
# Daily Delight

TUESDAY • MAY 7 • 2024

## National Barrier Awareness Day

May 7th is National Barrier Awareness Day, a day dedicated to finding ways to break down obstacles and dissolve stigmas that keep people with disabilities from advancing, especially in education. It's an opportunity to tear down walls and build ramps that provide access, and eliminate ineffective or outdated policies preventing those with disabilities from accessing their full potential.

Approximately 36 million Americans suffer from some form of handicap, and around eighty percent of Americans will experience some disability in their lifetime. That makes it necessary for people to understand and appreciate both the barriers that those who are disabled must surmount and the tremendous contributions that they can make to our society.



## Today in History



In 1847, the American Medical Association was established in Philadelphia. Dr. Nathan S. Davis called for a national medical convention that led to the establishment. The AMA has played a crucial role in the development of medicine in the U.S.

senior **living**  
activity assistant  
powered by **spectrio**



## DID YOU KNOW? Equally Yoked

Farmers used a 'yoke' to join their animals together. This simple wooden beam, placed across the necks of oxen or horses, allowed them to pull heavy loads as a team. The yoke made farming more efficient, as two animals could plow fields or haul goods faster than one. This ancient tool was so important that it's even mentioned in the Bible and other historical texts. So, yoke is a nod to our agricultural past.

## TRIVIA

Which of these countries declared sign language as a national language?

**A** Croatia

**B** Albania

**C** France

**D** Mexico

## TODAY'S FUNNY

I wanted to take pictures of the fog this morning but I mist my chance.

*I guess I could dew it tomorrow.*

## TODAY'S WISDOM

*"You can't use up creativity. The more you use, the more you have."*

*– Maya Angelou*

# WORD SEARCH

D E F O N N B S G F Y A B F  
G C R Y C C A H Y X L A A E  
N V C E L L A R M S W V S R  
V W H V M A S B M I O I E M  
L G A B A C S H E S V N A E  
H E M N A R N M R R I T S N  
E N P P C R I D L W N N S T  
V A A A S Y R E O H O E L A  
F W G C L A R E T T P R T T  
I P N N Y N A E L A A C A I  
H N E E C F M N R S L N L O  
D Y N N R A Y G W A V S O N  
N I C H A R D O N N A Y H I  
V Z H S I M N F T R H H F L

BARRELS  
CABERNET  
CELLAR  
CHAMPAGNE  
CHARDONNAY

CLARET  
FERMENTATION  
GRAPES  
MERLOT  
VARIETALS

VINEYARD  
VINO  
VINTNER  
WINE

---

# SUDOKU

## How To Play:

Each 9x9 box is comprised of 9 smaller 3x3 boxes. Each of these smaller boxes must be filled in with numbers from 1-9. Each row and column of the larger 9x9 box should not have any numbers repeated.

		6		7	1			5
4		7		5		1	8	2
2		5		3				
	4		9				6	
	7	2		1	6	9		
					7	3		1
6	8						9	
			4		3		5	
3		9	7		8			

	8	1				3	9	
3						2	1	
	9		7					
						8	4	2
4	7	9	1					
6			5	3				
				7	1		3	9
	1	3		8				
		2			9			4

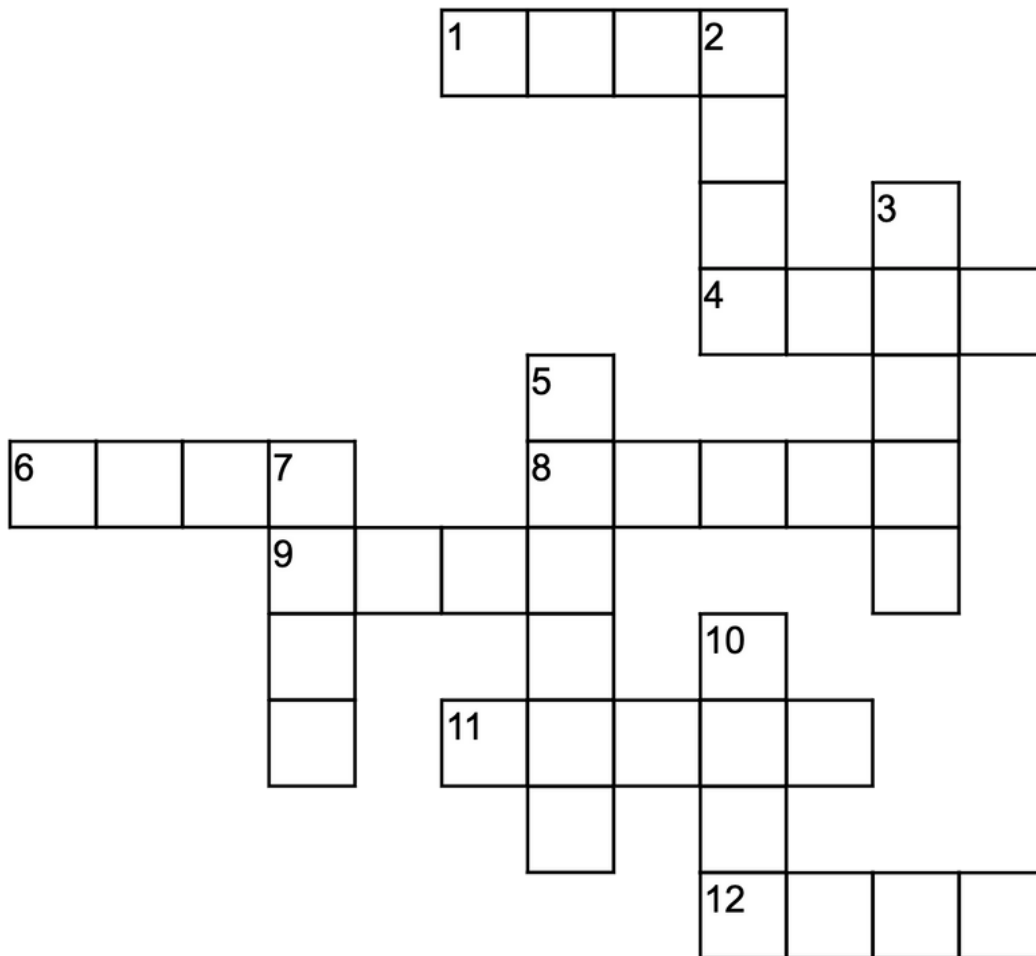
## Helpful Tip:

If you get stuck, try asking yourself "Where can I place number X in this row or column?" Scan to see if the number is already in that row, column, or box.

# WORD JUMBLE

Every answer uses only the letters in the word:

**EXPLORATION**



## Down

- 2. Mention
- 3. "Try it out" size
- 5. Market goods
- 7. Without ice
- 10. Crazy as a \_\_\_\_

## Across

- 1. Ache
- 4. Make money
- 6. When a door is ajar
- 8. Bonus
- 9. To leave
- 11. Air captain
- 12. After this

# Spotlight Trivia

1. How many horses compete in the Kentucky Derby?

- A. 20
- B. 17
- C. 15
- D. 27

2. What is the official flower of the Kentucky Derby?

- A. Violet
- B. Daisy
- C. Rose
- D. Hydranga

3. What was constructed on top of the Churchill Downs grandstand to give it a striking appearance

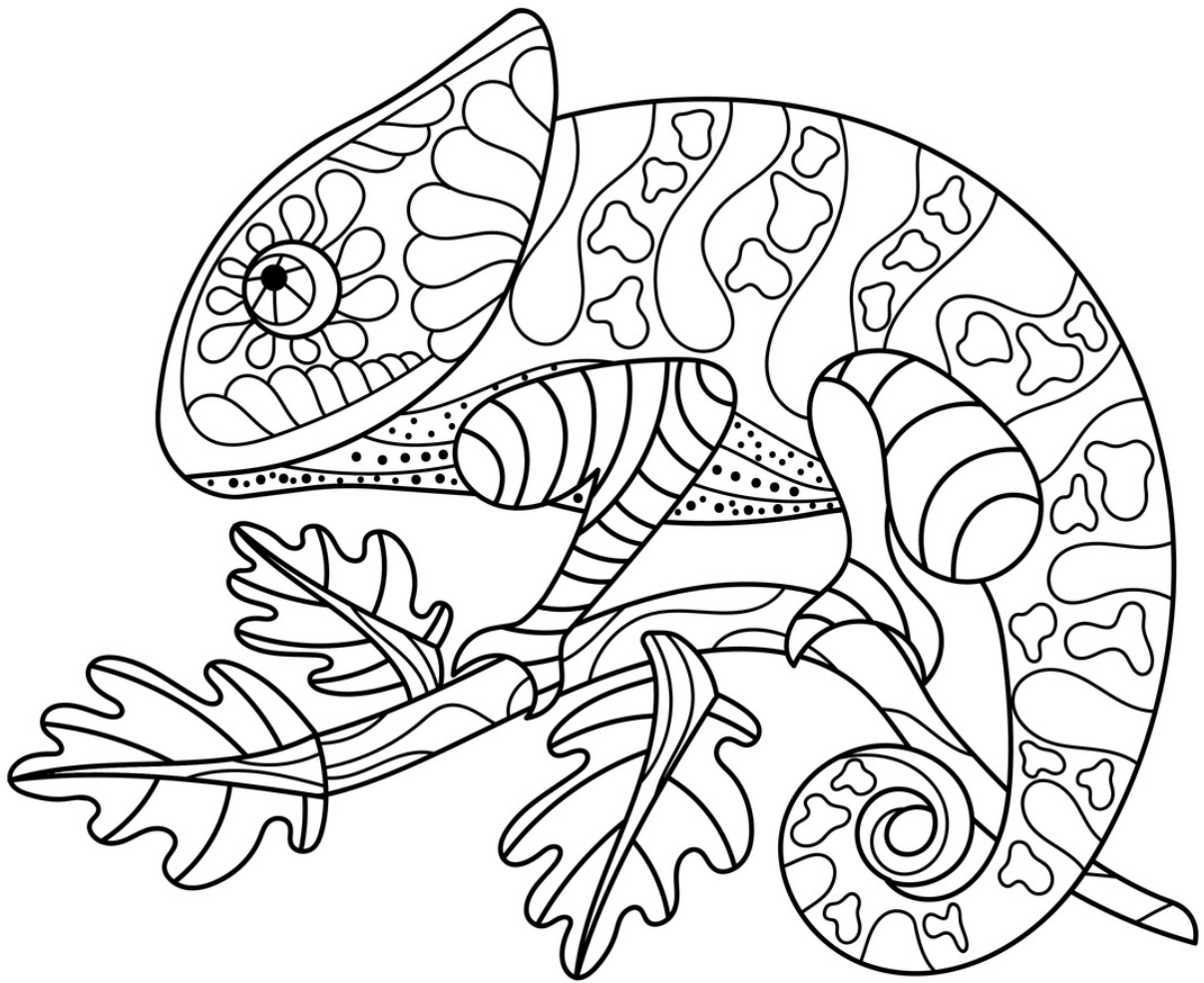
- A. Double Steeples
- B. The Twin Spires
- C. Tandem Towers
- D. Duo Cupolas

4. How many female jockeys have competed in the Kentucky Derby?

- A. 3
- B. 7
- C. 6
- D. 2

5. What is the traditional beverage of the Kentucky Derby?

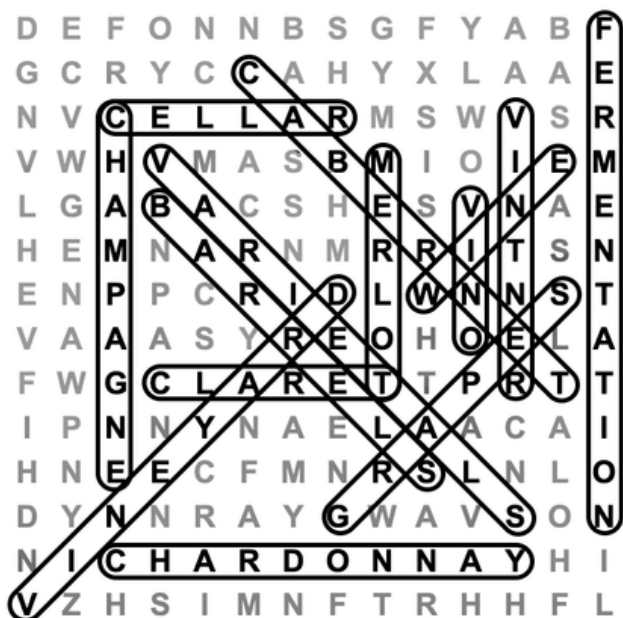
- A. Long Island Tea
  - B. Manhattan
  - C. Mint Julep
  - D. Harvey Walbanger
-



# SOLUTIONS

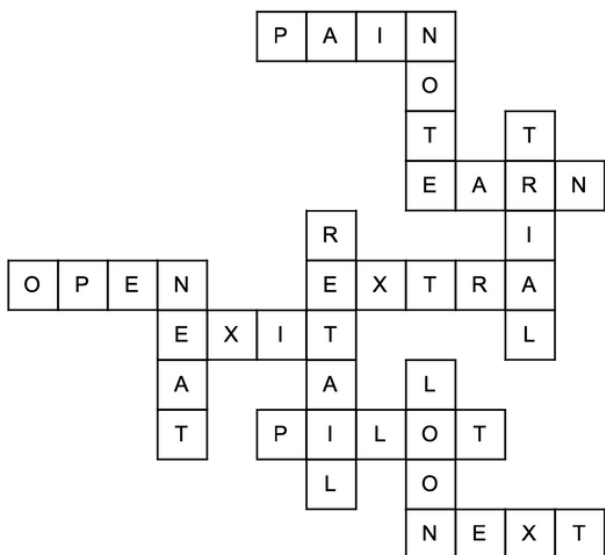
## Trivia Answer: D.

Mexican Sign Language (lengua de señas mexicana, or LSM) was declared a "national language" in 2003, and it began to use in public deaf education.



8	9	6	2	7	1	4	3	5
4	3	7	6	5	9	1	8	2
2	1	5	8	3	4	6	7	9
1	4	3	9	8	2	5	6	7
5	7	2	3	1	6	9	4	8
9	6	8	5	4	7	3	2	1
6	8	4	1	2	5	7	9	3
7	2	1	4	9	3	8	5	6
3	5	9	7	6	8	2	1	4

5	8	1	6	4	2	3	9	7
3	4	7	8	9	5	2	1	6
2	9	6	7	1	3	4	5	8
1	3	5	9	6	7	8	4	2
4	7	9	1	2	8	5	6	3
6	2	8	5	3	4	9	7	1
8	5	4	2	7	1	6	3	9
9	1	3	4	8	6	7	2	5
7	6	2	3	5	9	1	8	4



## Spotlight Trivia:

1. A. 20
2. C. Rose
3. B. The Twin Spires
4. C. 6
5. C. Mint Julep