



ZOO

WELCOME everybody!!!

ADMIT ONE  
9002587



senior living media™  
AN OSBORN COMPANY

# Zoo Word Search

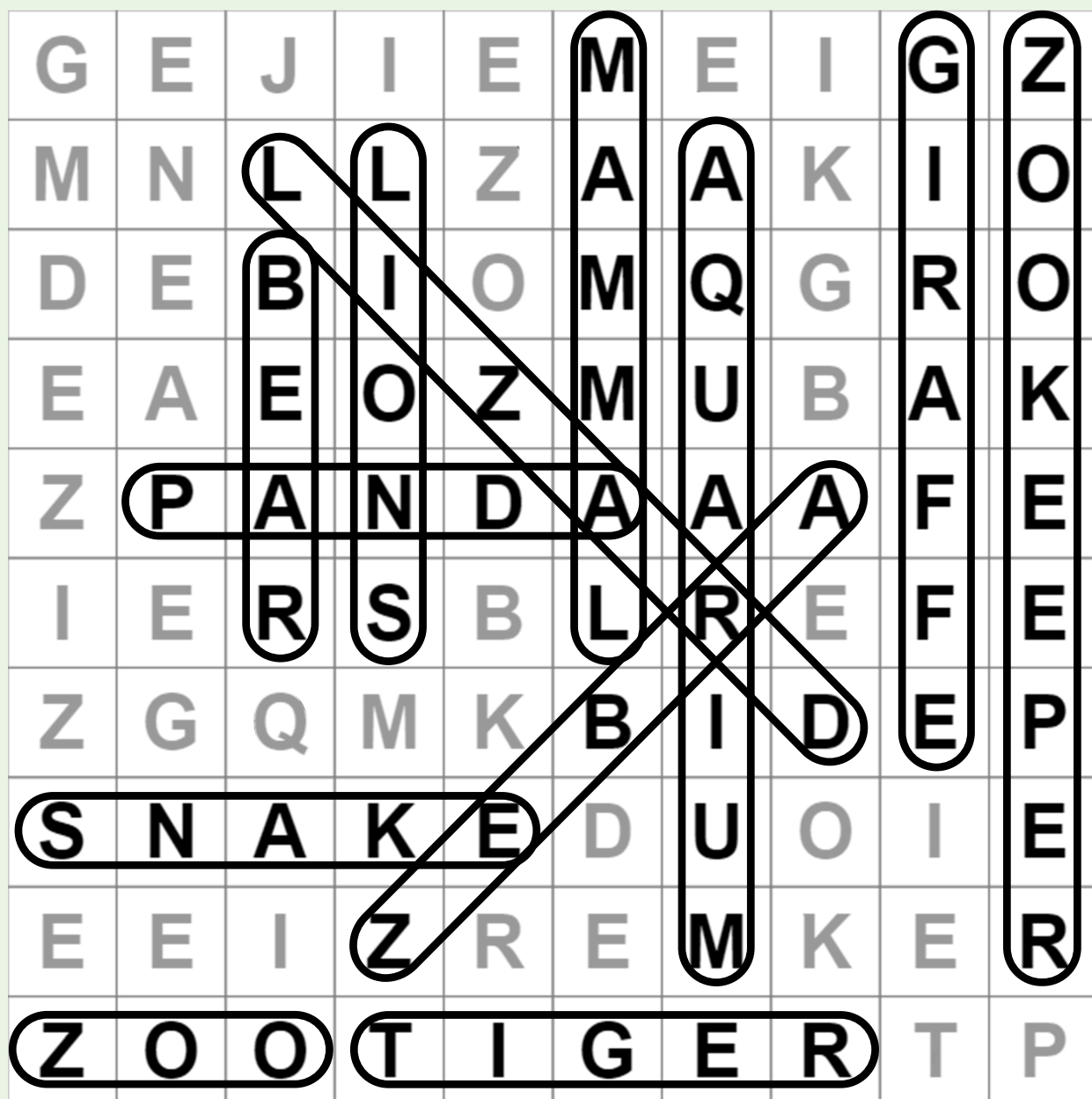


- Aquarium
- Bear
- Giraffe
- Lions
- Lizard
- Mammal
- Panda
- Snake
- Tiger
- Zebra
- Zoo
- Zookeeper



# Zoo Word Search

Answers:



- |            |             |
|------------|-------------|
| ■ Aquarium | ■ Panda     |
| ■ Bear     | ■ Snake     |
| ■ Giraffe  | ■ Tiger     |
| ■ Lions    | ■ Zebra     |
| ■ Lizard   | ■ Zoo       |
| ■ Mammal   | ■ Zookeeper |



# Zoo Animal Trivia

(Answers are at the bottom)

The giant panda, beloved all over the world, is considered a "National Treasure" in which country?



- A. Nepal
- B. Japan
- C. China
- D. Tibet



The giraffe is the tallest land animal. Approximately how tall is it at maturity?

- A. 10-14 feet
- B. 8-12 feet
- C. 6-10 feet
- D. 14-18 feet

How heavy are the largest rhinoceros?

- A. 3500 - 5000 pounds
- B. 5000 - 7500 pounds
- C. 1700-2500 pounds
- D. 1500-2000 pounds

Which species of tiger was extinct at the start of the 21st century?



- A. Caspian
- B. Bengal
- C. Siberian
- D. Malayan



What is the generic name for this ugly carrion-eating bird?

- A. Golden Eagle
- B. Redtailed Hawk
- C. Raven
- D. Vulture

The zebra is an equid, a member of the horse family. How fast can a zebra run?

- A. Up to 5 miles per hour
- B. Up to 35 miles per hour
- C. Up to 15 miles per hour
- D. Up to 25 miles per hour

The common hippopotamus lives in lakes and rivers in the central part of Africa.

How long is the average hippo?

- A. 18-20 feet
- B. 4-7 feet
- C. 10-16 feet
- D. 7-10 feet



What does the name "orangutan" mean?

- A. Tree swinger
- B. Orange ape
- C. Person of the forest
- D. Hairy beast



The okapi is a relative of which animal?

- A. Llama
- B. Giraffe
- C. Camel
- D. Zebra

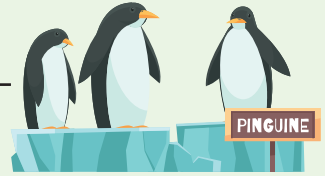


# Zoo Word Jumble

(Answers are at the bottom)



NLIO \_\_\_\_\_ RAFEGIF \_\_\_\_\_

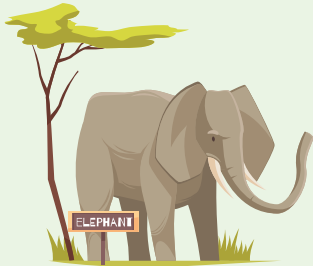


RLUTTE \_\_\_\_\_ GPEUNINS \_\_\_\_\_

KAESNS \_\_\_\_\_ LAORP ERAB \_\_\_\_\_



LOW \_\_\_\_\_ ORCDCIELO \_\_\_\_\_



OZOEPEKRE \_\_\_\_\_ GORSF \_\_\_\_\_

GREIT \_\_\_\_\_ HISF \_\_\_\_\_



KOMEYN \_\_\_\_\_ ABRITB \_\_\_\_\_



RABE \_\_\_\_\_ OENDYK \_\_\_\_\_



EESTPNALH \_\_\_\_\_ BZREA \_\_\_\_\_

PDALEOR \_\_\_\_\_ POLNIHD \_\_\_\_\_



KDUC \_\_\_\_\_ LARLIGO \_\_\_\_\_



LKAO \_\_\_\_\_ DRBI \_\_\_\_\_

Lion, Turtle, Snakes, Owl, Zookeeper, Tiger, Monkey, Bear, Elephants, Leopard, Duck, Kola, Giraffe, Penguins, Polar Bear, Crocodile, Frogs, Fish, Rabbit, Donkey, Zebra, Dolphin, Gorilla, Bird

# How Much Do Animals Eat?

(Answers are at the bottom)

## Word Bank

Giraffes

Alligator

Zebras

Hippopotamus

Sloth

Elephants

Orangutan

Tigers

Pandas

Rhinoceros



- 250-300 Pounds \_\_\_\_\_

- Eat almost entirely bamboo from 26-84 pounds per day. \_\_\_\_\_

- Between 10 and 25 pounds of prey a day, sometimes gorging up to one hundred pounds at one sitting, then fast for many days. \_\_\_\_\_

- Spend much of their day grazing and drink up to one gallon of water at a time. \_\_\_\_\_

- Eat up to 75 pounds of food per day. Mostly leaves of acacia trees. \_\_\_\_\_

- Despite their enormous weight, they eat an average of only 88 pounds of food a night. \_\_\_\_\_

- Mostly consuming fruits they still require a mixture of sugars and fats and carbs just like humans. They spend up to six hours a day eating or foraging for food. \_\_\_\_\_

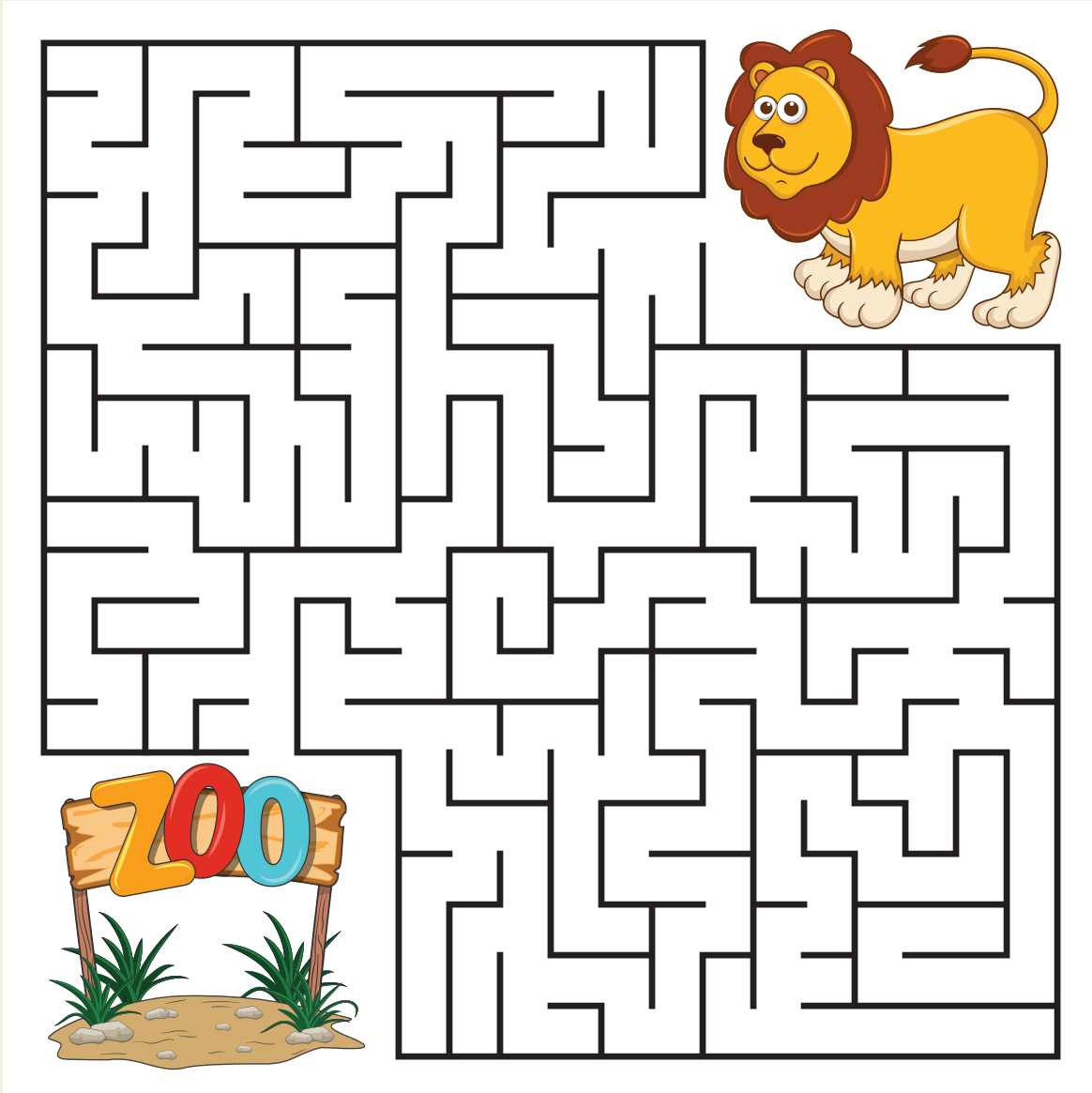
- Must eat up to 120 pounds of grass per day to sustain themselves. \_\_\_\_\_

- Only eating every 5-6 days, but 6-8 pounds at a time. This may not seem like much food, but lounging doesn't use much energy. \_\_\_\_\_

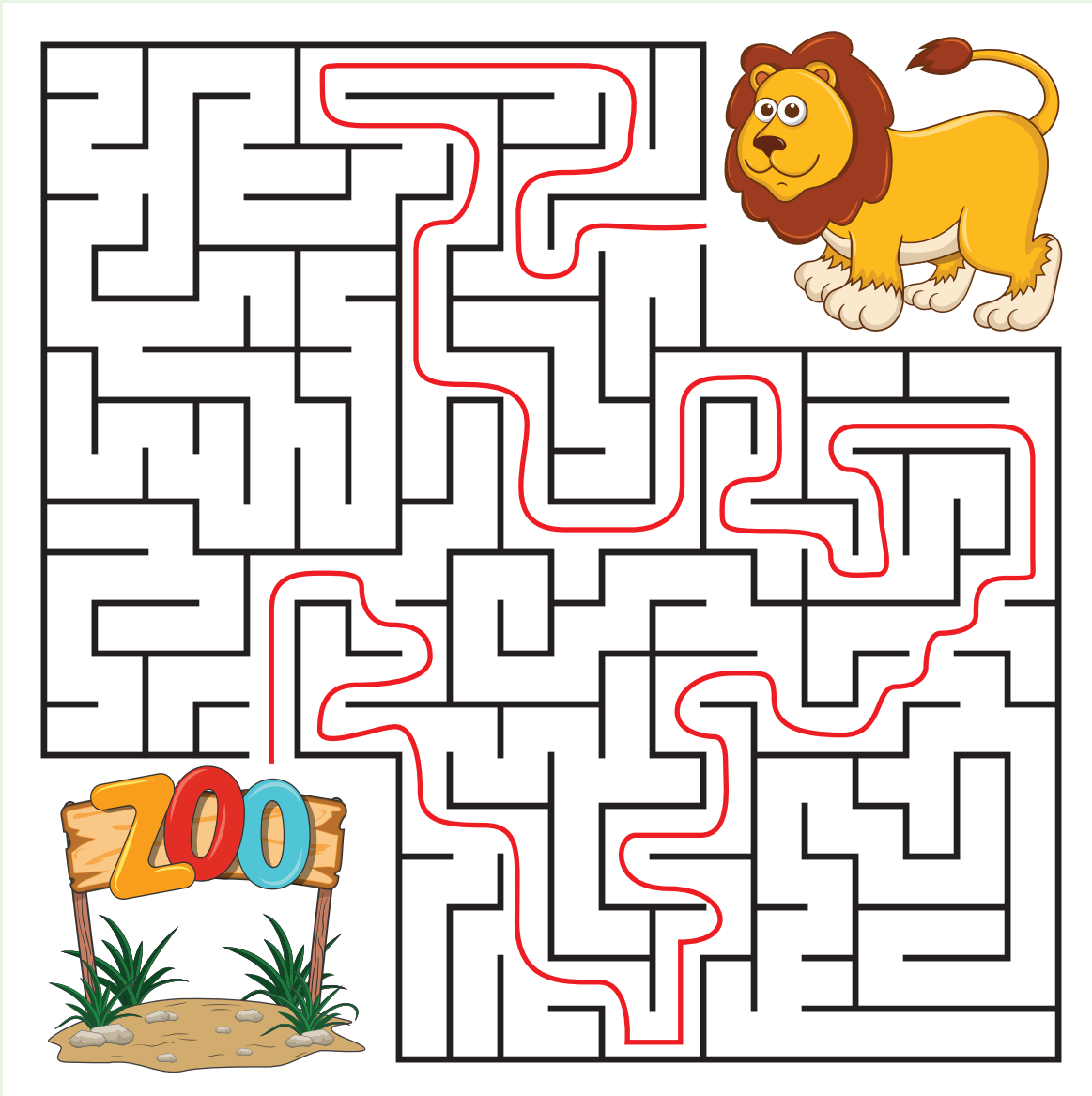
- Sleeping 15-20 hours a day and even then pretty much stay motionless, these animals eat leaves, shoots and fruit. \_\_\_\_\_

# A-Maze-ing

(Answers are on the next page)



# A-Maze-ing Answers

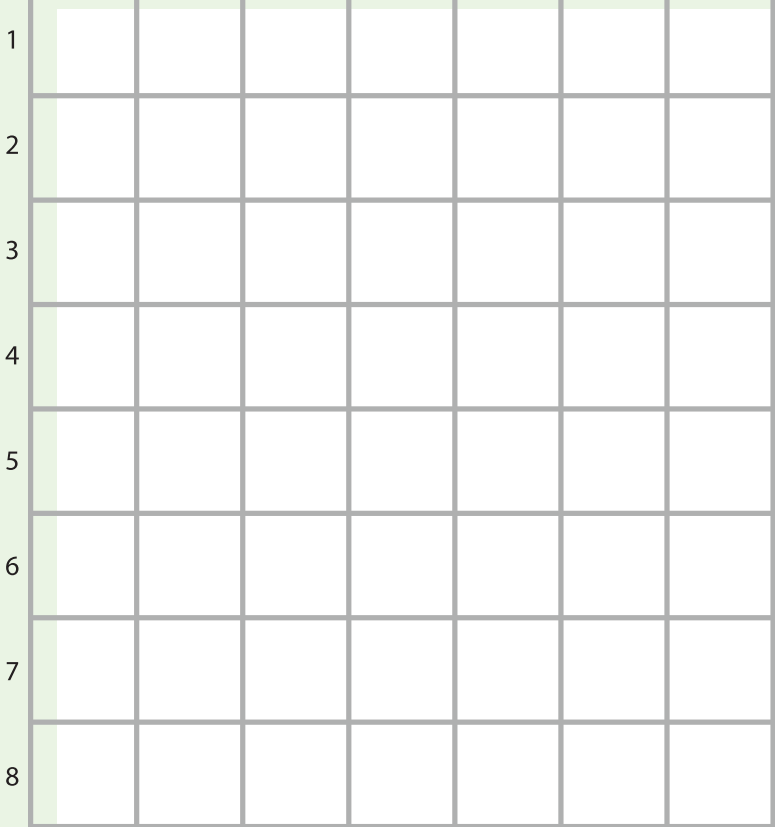
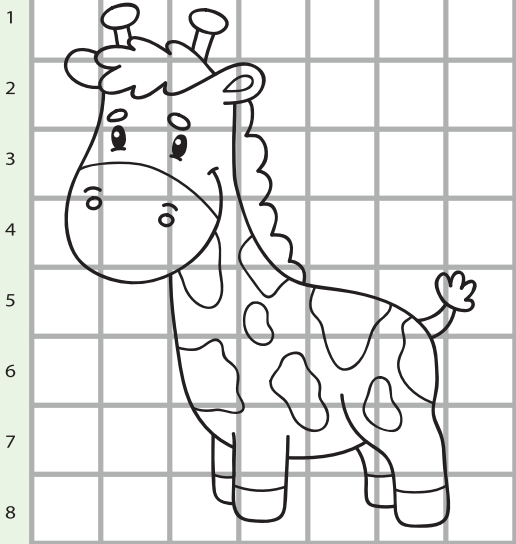


# Copy the Picture



A B C D E F H

A B C D E F H



**COPY THE PICTURE  
using a grid**

